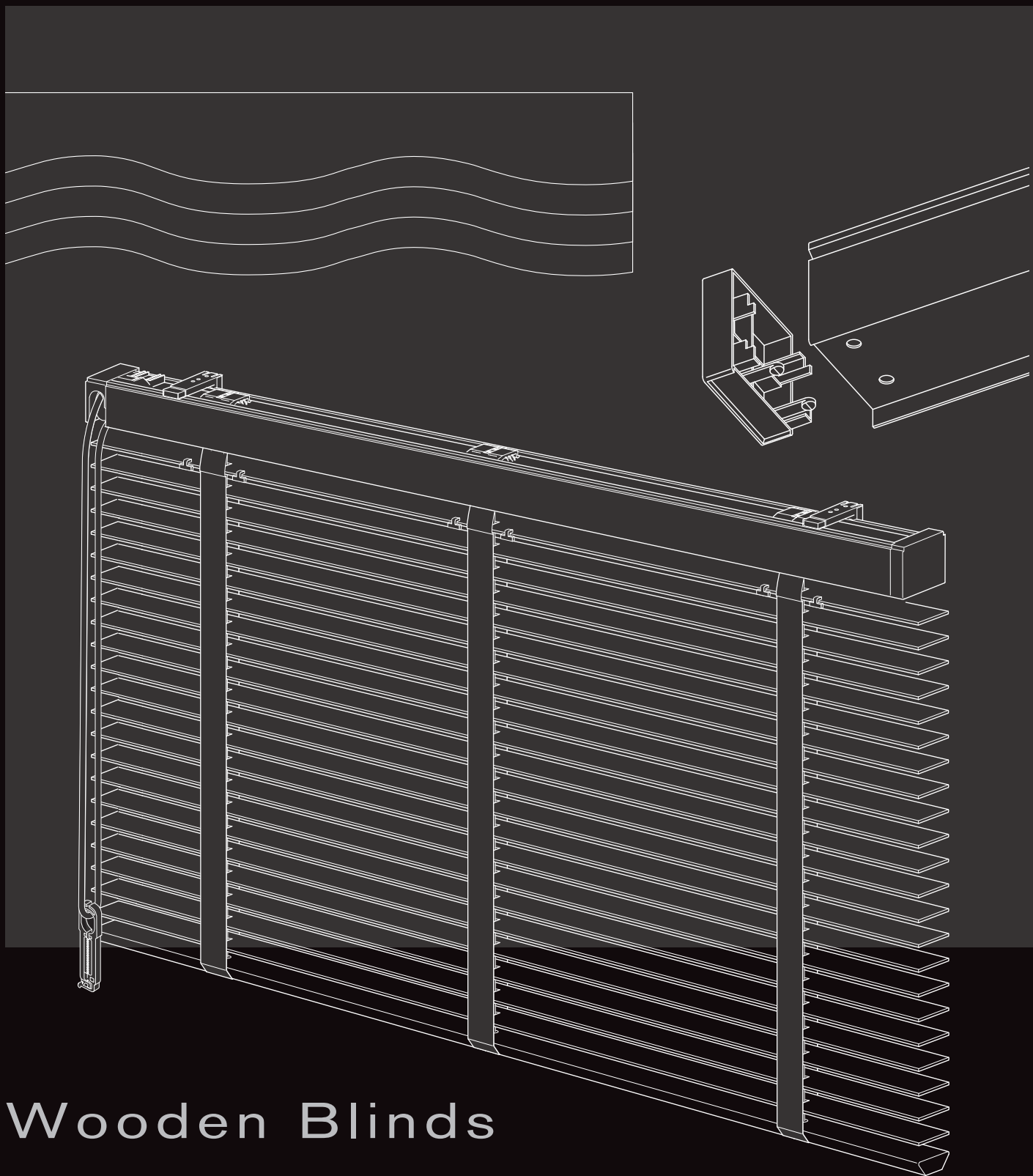


# Wooden Blinds Product Manual

**TOSO**  
JAPAN  
Premium Curtain Rails & Blinds



# Wooden Blinds Product Manual

# Contents

Product Line-up .....	2
-----------------------	---

## Slat Variation

STANDARD .....	4
PAULOWNIA .....	8
EARTH .....	10
VINTAGE .....	12
COLT .....	14
FR, FR/ WR .....	16
WAVE .....	18

## Options

For Partition Use .....	20
Two-on-One Head Rail Blind Set.....	21
Color Combination .....	22
Valance .....	24

## Specifications and Structure

VENEWOOD 50 .....	26
VENEWOOD 50T.....	28
VENEWOOD TOUCH 50 .....	30
VENEWOOD TOUCH 50T .....	32

Installation Method .....	34
---------------------------	----

How to Take Measurements .....	34
--------------------------------	----

Height Adjustment Method .....	35
--------------------------------	----

How to Change the Operation Side .....	36
--	----



Maintenance .....	37
-------------------	----

How to Order .....	38
--------------------	----



Order Form .....	39
------------------	----

Color Combination Order Form .....	40
------------------------------------	----

# Product Line-up

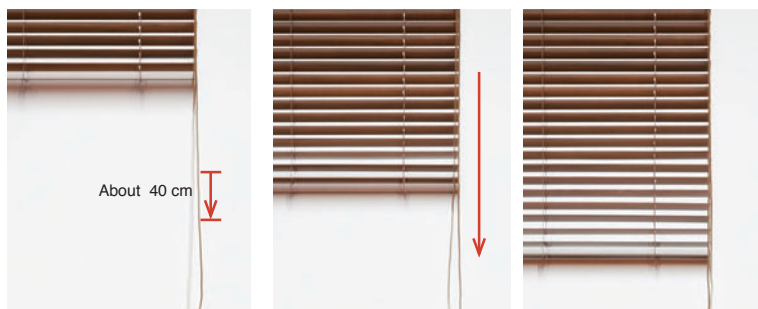
Operation Method				Loop Cord Type	
Product Name				VENEWOOD 50	VENEWOOD 50T
Product Photo					
Ladder Type				Ladder Cord	Ladder Tape
Allowable Size	Product Width (W)			350–2,400 mm <small>*WAVE is 550–1,940 mm.</small>	350–2,400 mm
	Product Height (H)			500–3,000 mm <small>*When the product width is 500 mm or less, the maximum height is 2,220 mm. *WAVE is 550–2,500 mm.</small>	500–3,000 mm <small>*When the product width is 500 mm or less, the maximum height is 2,220 mm.</small>
	Maximum Area (W x H)			6 m <sup>2</sup> <small>*PAULOWNIA is 7.2 m<sup>2</sup>. *FR, FR/ WR and WAVE are 4 m<sup>2</sup>.</small>	6 m <sup>2</sup> <small>*PAULOWNIA is 7.2 m<sup>2</sup>. *FR is 4 m<sup>2</sup>.</small>
Available Series (Slat: 50 mm)	STANDARD	16 colors	page 4	●	●
	PAULOWNIA	2 colors	page 8	●	●
	EARTH	1 color	page 10	●	●
	VINTAGE	6 colors	page 12	●	●
	COLT	9 colors	page 14	●	●
	FR	4 colors	page 16	●	●
	FR/ WR	4 colors	page 16	●	-
	WAVE	3 colors	page 18	●	-
Options	For Partition Use		page 20	● <small>*COLT and WAVE are not available.</small>	● <small>*COLT is not available.</small>
	Two-on-One Head Rail Blind Set		page 21	● <small>*FR, FR/ WR and WAVE are not available.</small>	-
	Bracket Cover* / Bracket Spacer		page 21	●	●
	Color Combination		page 22	● <small>*EARTH, FR, FR/ WR and WAVE are not available.</small>	● <small>*EARTH and FR are not available.</small>
	Valance		page 24	● <small>*COLT and FR/ WR are not available.</small>	● <small>*COLT is not available.</small>

\*Only when ordering products

One-touch Closing Type	
VENEWOOD TOUCH 50	VENEWOOD TOUCH 50T
	
Ladder Cord	Ladder Tape
640–2,400 mm	640–2,400 mm
500–3,000 mm	500–3,000 mm
5 m <sup>2</sup> *PAULOWNIA is 6 m <sup>2</sup> .	5 m <sup>2</sup> *PAULOWNIA is 6 m <sup>2</sup> .
●	●
●	●
●	●
●	●
●	●
-	-
-	-
-	-
● *COLT is not available.	● *COLT is not available.
-	-
●	●
● *EARTH is not available.	● *EARTH is not available.
● *COLT is not available.	● *COLT is not available.

## One-touch Closing Type

Automatically closes and manually stops by one-touch operation. Close the blinds gradually by pulling the operation cord about 40 cm in the downward direction. When the blind reaches the desired position, pull the other side of the cord to hold the blind.



### One-touch Control



For large windows, the blind closes automatically several seconds after you pull the cord. Closing the blind is a hassle-free operation: all you do is pull the cord and release.

### Automatic Obstacle-Stop Device



The obstacle-stop function stops the blinds from closing if the Bottom Rail hits an obstacle. Restart the closing operation after removing the obstacle and raising the blind by a few centimeters.

### Speed Control

The One-touch Closing Type has a closing speed control function to prevent the slats from suddenly closing.

# STANDARD Series

## Standard Combination for Parts Color

\* Photos are cases for Ladder Tape Type.  
\*Ladder Cord of the same color as the Slat.  
\*Valance color is Bottom Rail color same.

TM-2001 Pure White



Bottom Rail TM-2001  
Ladder Tape L-001

TM-2002 Shabby White



Bottom Rail TM-2007  
Ladder Tape L-002

TM-2003 Grayish Mocha



Bottom Rail TM-2009  
Ladder Tape L-002

TM-2004 Grayish Natural



Bottom Rail TM-2004  
Ladder Tape L-004

TM-2005 Cork Beige



Bottom Rail TM-2005  
Ladder Tape L-012

TM-2006 Matt Gray



Bottom Rail TM-2006  
Ladder Tape L-018

TM-2007 Off White



Bottom Rail TM-2007  
Ladder Tape L-001

TM-2008 Antique White



Bottom Rail TM-2008  
Ladder Tape L-002

TM-2009 Natural



Bottom Rail TM-2009  
Ladder Tape L-007

TM-2010 Cherry



Bottom Rail TM-2010  
Ladder Tape L-011

TM-2011 Dark Brown



Bottom Rail TM-2011  
Ladder Tape L-012

TM-2012 Grayish Brown



Bottom Rail TM-2012  
Ladder Tape L-015



TM-2013 Soft Brown



Bottom Rail TM-2013  
Ladder Tape L-004

TM-2014 Antique Brown



Bottom Rail TM-2014  
Ladder Tape L-012

TM-2015 Deep Brown



Bottom Rail TM-2015  
Ladder Tape L-012

TM-2016 Bitter Brown



Bottom Rail TM-2016  
Ladder Tape L-015

Bottom Rail and Valance (option) colors are matched with the slat color, but wood grain and texture are different from the slat.

Slat		Common								VENEWOOD	VENEWOOD TOUCH
Number	Color	Bottom Rail * Valance (option) *		Head Rail	Head Cap Bottom Cover Bracket Cover	Operation Cord	Ladder Cord	Ladder Tape		Lift Tape	Lift Cord
		Number	Color	Color	Color	Color	Color	Number	Color	Color	Color
TM-2001	Pure White	TM-2001	Pure white	White	White	White	White	L-001	White	White	White
TM-2002	Shabby White	TM-2007	Off white	White	White	White	White	L-002	Smoke White	White	White
TM-2003	Grayish Mocha	TM-2009	Natural	Beige	Beige	Beige	Sand	L-002	Smoke White	Beige	Beige
TM-2004	Grayish Natural	TM-2004	Grayish natural	Beige	Beige	Beige	Oak	L-004	Dark Beige	Beige	Beige
TM-2005	Cork Beige	TM-2005	Cork beige	Dark Brown	Dark Brown	Dark Brown	Cocoa	L-012	Cocoa	Medium Brown	Brown
TM-2006	Matt Gray	TM-2006	Matt gray	Gray	Gray	Gray	Gray	L-018	Light Beige	Gray	Dark Gray
TM-2007	Off White	TM-2007	Off white	White	White	White	White	L-001	White	White	White
TM-2008	Antique White	TM-2008	Antique white	White	White	White	Sand	L-002	Smoke White	White	White
TM-2009	Natural	TM-2009	Natural	Beige	Beige	Beige	Sand	L-007	Butter Scotch	Beige	Beige
TM-2010	Cherry	TM-2010	Cherry	Dark Brown	Dark Brown	Dark Brown	Cocoa	L-011	Coffee Brown	Medium Brown	Brown
TM-2011	Dark Brown	TM-2011	Dark brown	Dark Brown	Dark Brown	Dark Brown	Cocoa	L-012	Cocoa	Dark Brown	Brown
TM-2012	Grayish Brown	TM-2012	Grayish brown	Deep Brown	Deep Brown	Deep Brown	Cocoa	L-015	Charcoal Brown	Deep Brown	Brown
TM-2013	Soft Brown	TM-2013	Soft brown	Soft Brown	Soft Brown	Soft Brown	Oak	L-004	Dark Beige	Soft Brown	Brown
TM-2014	Antique Brown	TM-2014	Antique brown	Dark Brown	Dark Brown	Dark Brown	Cocoa	L-012	Cocoa	Dark Brown	Brown
TM-2015	Deep Brown	TM-2015	Deep brown	Deep Brown	Deep Brown	Deep Brown	Cocoa	L-012	Cocoa	Deep Brown	Brown
TM-2016	Bitter Brown	TM-2016	Bitter brown	Deep Brown	Deep Brown	Deep Brown	Black	L-015	Charcoal Brown	Deep Brown	Black

Standard Series

Operation System

VENEWOOD  
(Loop Cord Type)



With one cord, raising/lowering  
slats and tilting are available.

→ page 26 or 28

VENEWOOD TOUCH  
(One-touch Closing Type)



With one touch operation,  
automatic closing is possible

→ page 30 or 32

Ladder Type

Choose Ladder Cord  
or Ladder Tape.



Ladder Cord



Ladder Tape

Valance (option) Additional Charge

Valance covers the Head Rail.

\*Standard type is without Valance.  
\*Possible to specify Valance (option)  
only when ordering.

→ page 24



Ladder Tape Color Lineup

\*Possible to choose colors other than the standard combination.



L-001  
White



L-002  
Smoke White



L-018  
Light Beige



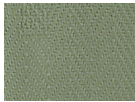
L-005  
Sand Beige



L-004  
Dark Beige



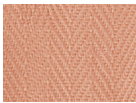
L-007  
Butter Scotch



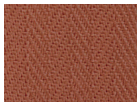
L-010  
Leaf Green



L-015  
Charcoal Brown



L-009  
Rose



L-014  
Red Brown



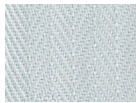
L-013  
Maroon



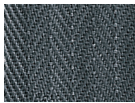
L-011  
Coffee Brown



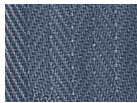
L-012  
Cocoa



L-008  
Silver Gray



L-016  
Dark Gray

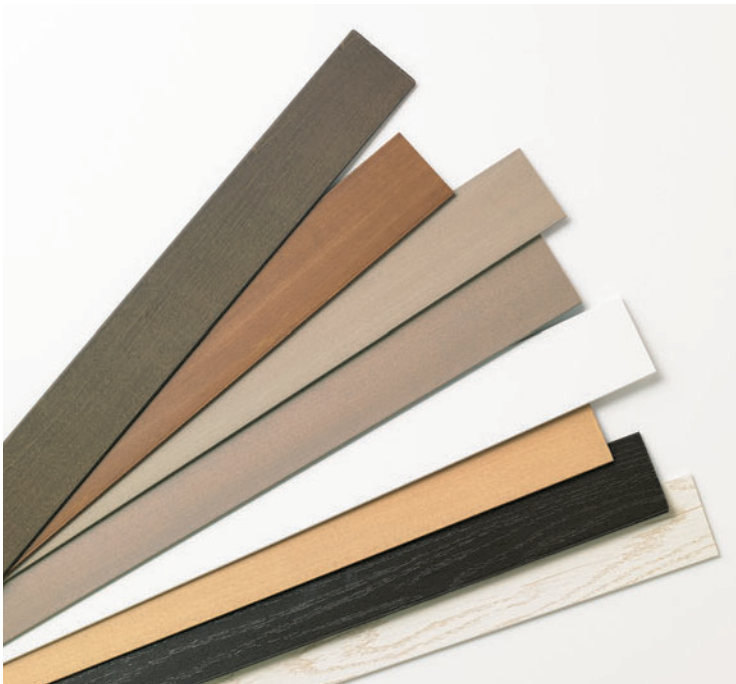


L-017  
Dark Blue

Features

Find colors that fit any interior,  
a fully comprehensive selection of  
16 colors.

Sixteen perfect colors in the STANDARD series.  
Comfortable harmony with furniture, floors, and windows.







VENEWOOD 50T STANDARD, TM-2011 Dark Brown, Option Valance

PAULOWNIA Series

Standard Combination for Parts Color

\* Photos are cases for Ladder Tape Type.  
\*Ladder Cord of the same color as the Slat.  
\*Valance color is Bottom Rail color same.

TM-2101 *Kinari*



Bottom Rail TM-2009  
Ladder Tape L-018

TM-2102 *Fushi*



Bottom Rail TM-2004  
Ladder Tape L-004

Bottom Rail and Valance (option) colors are matched with the slat color, but wood grain and texture are different from the slat.

Slat		Common								VEENEWOOD	VEENEWOOD TOUCH
Number	Color	Bottom Rail * Valance (option) *		Head Rail	Head Cap Bottom Cover Bracket Cover	Operation Cord	Ladder Cord	Ladder Tape		Lift Tape	Lift Cord
		Number	Color	Color	Color	Color	Color	Number	Color	Color	Color
TM-2101	<i>Kinari</i>	TM-2009	Natural	Beige	Beige	Beige	Sand	L-018	Light Beige	Beige	Beige
TM-2102	<i>Fushi</i>	TM-2004	Grayish Natural	Soft Brown	Soft Brown	Soft Brown	Oak	L-004	Dark Beige	Medium Brown	Brown



VEENEWOOD 50 PAULOWNIA, TM-2101 *Kinari*



## Operation System

### VENEWOOD (Loop Cord Type)



With one cord, raising/lowering slats and tilting are available.

→ page 26 or 28

### VENEWOOD TOUCH (One-touch Closing Type)

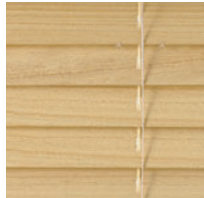


With one touch operation, automatic closing is possible.

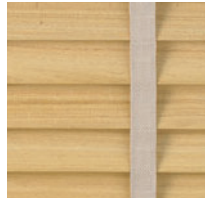
→ page 30 or 32

## Ladder Type

Choose Ladder Cord or Ladder Tape.



Ladder Cord



Ladder Tape

## Valance (option)

Additional Charge

Valance covers the Head Rail.

\*Standard type is without Valance.

\*Possible to specify Valance (option) only when ordering.

→ page 24



## Ladder Tape Color Lineup

\*Possible to choose colors other than the standard combination.



L-001  
White



L-002  
Smoke White



L-018  
Light Beige



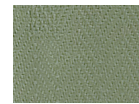
L-005  
Sand Beige



L-004  
Dark Beige



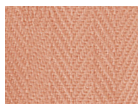
L-007  
Butter Scotch



L-010  
Leaf Green



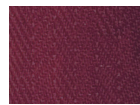
L-015  
Charcoal Brown



L-009  
Rose



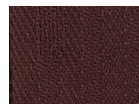
L-014  
Red Brown



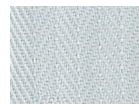
L-013  
Maroon



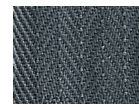
L-011  
Coffee Brown



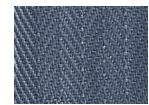
L-012  
Cocoa



L-008  
Silver Gray



L-016  
Dark Gray



L-017  
Dark Blue

## Features

### Enjoy the beauty of paulownia

The PAULOWNIA series is finished in a natural varnish to complement the wood grain. Enjoy the natural white tone and soft grain of the carefully selected paulownia wood.



### A lightweight design ideal for large windows

Paulownia is one of the lightest woods used for interiors. The light weight of paulownia translates into easy-to-operate wooden blinds. Ideal for large windows.



VENEWOOD 50T PAULOWNIA, TM-2102 *Fushi*

As the years pass, the light and heat of the sun fade the color tones of paulownia.

The photograph shows results from a TOSO UV fade meter test. Discoloration varies with environmental and solar radiation conditions and individual differences in wood.

Discoloration condition

TM-2101



Before

After

TM-2102



Before

After

# EARTH Series

## Standard Combination for Parts Color

\* Photos are cases for Ladder Tape Type.  
 \*Ladder Cord of the same color as the Slat.  
 \*Valance color is Bottom Rail color same.

### TM-2201 Natural Wood



Bottom Rail TM-2009

Ladder Tape L-007

Bottom Rail and Valance (option) colors are matched with the slat color, but wood grain and texture are different from the slat.

Slat		Common								VENEWOOD	VENEWOOD TOUCH
Number	Color	Bottom Rail * Valance (option) *		Head Rail	Head Cap Bottom Cover Bracket Cover	Operation Cord	Ladder Cord	Ladder Tape		Lift Tape	Lift Cord
		Number	Color	Color	Color	Color	Color	Number	Color	Color	Color
TM-2201	Natural Wood	TM-2009	Natural	Beige	Beige	Beige	Sand	L-007	Butter Scotch	Beige	Beige

## Operation System

### VENEWOOD (Loop Cord Type)



With one cord, raising/lowering slats and tilting are available.

→ page 26 or 28

### VENEWOOD TOUCH (One-touch Closing Type)

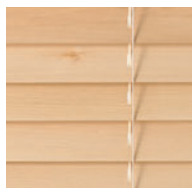


With one touch operation, automatic closing is possible.

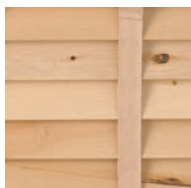
→ page 30 or 32

## Ladder Type

Choose Ladder Cord or Ladder Tape.



Ladder Cord



Ladder Tape

## Valance (option)

Additional Charge

Valance covers the Head Rail.

\*Standard type is without Valance.

\*Possible to specify Valance (option) only when ordering.

→ page 24

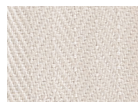


## Ladder Tape Color Lineup

\*Possible to choose colors other than the standard combination.



L-001  
White



L-002  
Smoke White



L-018  
Light Beige



L-005  
Sand Beige



L-004  
Dark Beige



L-007  
Butter Scotch



L-010  
Leaf Green



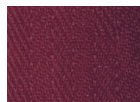
L-015  
Charcoal Brown



L-009  
Rose



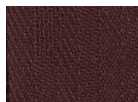
L-014  
Red Brown



L-013  
Maroon



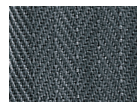
L-011  
Coffee Brown



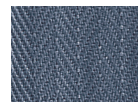
L-012  
Cocoa



L-008  
Silver Gray



L-016  
Dark Gray



L-017  
Dark Blue

## Furniture made of solid wood

The EARTH series blinds make the most of the advantages of natural wood.

The slat surfaces facing out the window are left mostly unfinished to preserve their natural appearance.



## The rich idiosyncrasies of natural wood

The variation in color is achieved by keeping the wood natural.

Solid wood varies in grain and color. The wooden knots and streaks are one-of-a-kind in every slat.



\*While the wood selected is highly stable and sufficiently dried, please remember that some bending and warping may occur in some installation environments.

\*Do not install in rooms exposed to high temperature or humidity, where condensation easily occurs, or where fires burn nearby.



# VINTAGE Series

## Standard Combination for Parts Color

\* Photos are cases for Ladder Tape Type.  
 \*Ladder Cord of the same color as the Slat.  
 \*Valance color is Bottom Rail color same.

### California Style

TM-2301 Smoky White



Bottom Rail TM-2007  
 Ladder Tape L-002

TM-2302 Vintage Blue



Bottom Rail TM-2007  
 Ladder Tape L-002

TM-2303 Mocha



Bottom Rail TM-2005  
 Ladder Tape L-005

### Brooklyn Style

TM-2304 Rustic Beige



Bottom Rail TM-2005  
 Ladder Tape L-011

TM-2305 Brick Brown



Bottom Rail TM-2014  
 Ladder Tape L-012

TM-2306 Dark Clove



Bottom Rail TM-2306  
 Ladder Tape L-015

Bottom Rail and Valance (option) colors are matched with the slat color, but wood grain and texture are different from the slat.

Slat		Common								VENEWOOD	VENEWOOD TOUCH
Number	Color	Bottom Rail * Valance (option) *		Head Rail	Head Cap Bottom Cover Bracket Cover	Operation Cord	Ladder Cord	Ladder Tape		Lift Tape	Lift Cord
		Number	Color	Color	Color	Color	Color	Number	Color	Color	Color
TM-2301	Smoky White	TM-2007	Off White	White	White	White	White	L-002	Smoke White	White	White
TM-2302	Vintage Blue	TM-2007	Off White	White	White	White	White	L-002	Smoke White	White	White
TM-2303	Mocha	TM-2005	Cork Beige	Dark Brown	Dark Brown	Dark Brown	Cocoa	L-005	Sand Beige	Medium Brown	Brown
TM-2304	Rustic Beige	TM-2005	Cork Beige	Soft Brown	Soft Brown	Soft Brown	Oak	L-011	Coffee Brown	Medium Brown	Brown
TM-2305	Brick Brown	TM-2014	Antique Brown	Dark Brown	Dark Brown	Dark Brown	Cocoa	L-012	Cocoa	Medium Brown	Brown
TM-2306	Dark Clove	TM-2306	Dark Clove	Deep Brown	Deep Brown	Deep Brown	Black	L-015	Charcoal Brown	Deep Brown	Brown



VENEWOOD 50 VINTAGE,  
 TM-2304 Rustic Beige, TM-2305 Brick Brown



## Operation System

### VENEWOOD (Loop Cord Type)



With one cord, raising/lowering slats and tilting are available.

→ page 26 or 28

### VENEWOOD TOUCH (One-touch Closing Type)

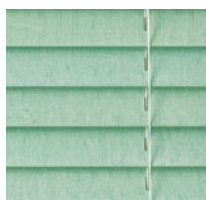


With one touch operation, automatic closing is possible.

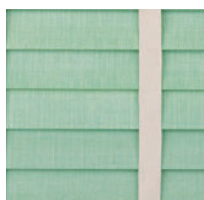
→ page 30 or 32

## Ladder Type

Choose Ladder Cord or Ladder Tape.



Ladder Cord



Ladder Tape

## Valance (option)

Additional Charge

Valance covers the Head Rail.

\*Standard type is without Valance.

\*Possible to specify Valance (option) only when ordering.

→ page 24

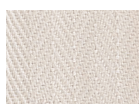


## Ladder Tape Color Lineup

\*Possible to choose colors other than the standard combination.



L-001  
White



L-002  
Smoke White



L-018  
Light Beige



L-005  
Sand Beige



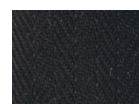
L-004  
Dark Beige



L-007  
Butter Scotch



L-010  
Leaf Green



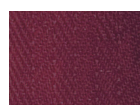
L-015  
Charcoal Brown



L-009  
Rose



L-014  
Red Brown



L-013  
Maroon



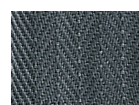
L-011  
Coffee Brown



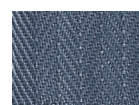
L-012  
Cocoa



L-008  
Silver Gray



L-016  
Dark Gray



L-017  
Dark Blue

## Features

### Two styles to suit your preference

Two styles are available in the vintage series lineup:

- California Style, in a bright, refreshing color tone
- Brooklyn Style, in a calm, darkish hue.

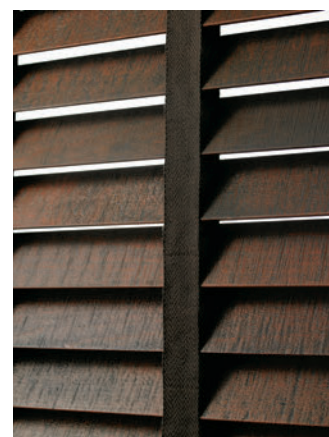
Choose the one you prefer.

### Vintage style, pursue the real thing

The slats are made of natural wood under a coat of uneven and sometimes hidden varnish. A rich vintage style clearly suits them best. The varnish finish on natural wood brings out two individual styles.



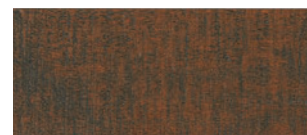
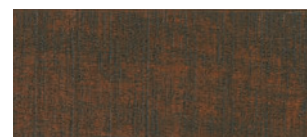
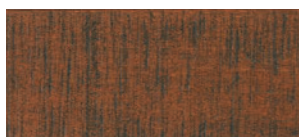
California Style



Brooklyn Style

The surfaces are distressed and varnished for a vintage effect. The color and pattern vary from slat to slat as a result. Enjoy the vintage feeling.

ex. TM-2305 Brick Brown



## COLT Series

## Standard Combination for Parts Color

\* Photos are cases for Ladder Tape Type.  
 \*Ladder Cord of the same color as the Slat.  
 \*Valance color is Bottom Rail color same.

TM-2401 White



Bottom Rail TM-2007  
 Ladder Tape L-001

TM-2402 Distressed Gray



Bottom Rail TM-2402  
 Ladder Tape L-001

TM-2403 Distressed Beige



Bottom Rail TM-2008  
 Ladder Tape L-002

TM-2404 Distressed Ash



Bottom Rail TM-2006  
 Ladder Tape L-005

TM-2405 Natural Grain



Bottom Rail TM-2009  
 Ladder Tape L-004

TM-2406 Medium Wood



Bottom Rail TM-2010  
 Ladder Tape L-011

TM-2407 Medium Oak



Bottom Rail TM-2011  
 Ladder Tape L-004

TM-2408 Bitter Wood



Bottom Rail TM-2011  
 Ladder Tape L-012

TM-2409 Dark Wood



Bottom Rail TM-2409  
 Ladder Tape L-005

Bottom Rail and Valance (option) colors are matched with the slat color, but wood grain and texture are different from the slat.

Slat		Common								VENEWOOD	VENEWOOD TOUCH
Number	Color	Bottom Rail *		Head Rail	Head Cap Bottom Cover Bracket Cover	Operation Cord	Ladder Cord	Ladder Tape		Lift Tape	Lift Cord
Number	Color	Number	Color	Color	Color	Color	Color	Number	Color	Color	Color
TM-2401	White	TM-2007	Off White	White	White	White	White	L-001	White	White	White
TM-2402	Distressed Gray	TM-2402	Distressed Gray	White	White	White	White	L-001	White	White	White
TM-2403	Distressed Beige	TM-2008	Antique White	White	White	White	Sand	L-002	Smoke White	White	White
TM-2404	Distressed Ash	TM-2006	Matt Gray	Gray	Gray	Gray	Gray	L-005	Sand Beige	Gray	Dark Gray
TM-2405	Natural Grain	TM-2009	Natural	Beige	Beige	Beige	Sand	L-004	Dark Beige	Beige	Beige
TM-2406	Medium Wood	TM-2010	Cherry	Dark Brown	Dark Brown	Dark Brown	Oak	L-011	Coffee Brown	Soft Brown	Brown
TM-2407	Medium Oak	TM-2011	Dark Brown	Soft Brown	Soft Brown	Soft Brown	Oak	L-004	Dark Beige	Soft Brown	Brown
TM-2408	Bitter Wood	TM-2011	Dark Brown	Dark Brown	Dark Brown	Dark Brown	Cocoa	L-012	Cocoa	Dark Brown	Brown
TM-2409	Dark Wood	TM-2409	Dark Wood	Deep Brown	Deep Brown	Deep Brown	Cocoa	L-005	Sand Beige	Dark Brown	Brown

## Operation System

### VENEWOOD (Loop Cord Type)



With one cord, raising/lowering slats and tilting are available.

→ page 26 or 28

### VENEWOOD TOUCH (One-touch Closing Type)



With one touch operation, automatic closing is possible.

→ page 30 or 32

## Ladder Type

Choose Ladder Cord or Ladder Tape.



Ladder Cord



Ladder Tape

## Valance (option)

Not available to be used

## Ladder Tape Color Lineup

\*Possible to choose colors other than the standard combination.



L-001  
White



L-002  
Smoke White



L-018  
Light Beige



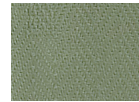
L-005  
Sand Beige



L-004  
Dark Beige



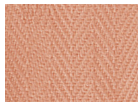
L-007  
Butter Scotch



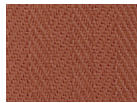
L-010  
Leaf Green



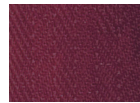
L-015  
Charcoal Brown



L-009  
Rose



L-014  
Red Brown



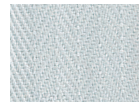
L-013  
Maroon



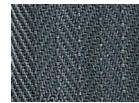
L-011  
Coffee Brown



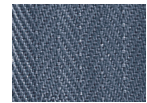
L-012  
Cocoa



L-008  
Silver Gray



L-016  
Dark Gray



L-017  
Dark Blue

## Features

### Nine-color variations to fit your interior

The COLT series slat comes in nine basic wood grain colors with mat finishes. The slats are uniform in color and immune to warping. COLT will serve well in various interior scenes.



VENEWOOD 50 COLT,  
TM-2403 Distressed Beige



VENEWOOD 50 COLT, TM-2401 White,  
Option: Two-on-One Head Rail Blind Set

Because the COLT slats are made of laminated wood, the joint parts of the finger joints may become visible.



Finger joint

## Slat Variation

# FR, FR/ WR Fire Retardant and Fire-and-water Resistance Series

### Standard Combination for Parts Color

\* Photos are cases for Ladder Tape Type.  
\*Ladder Cord of the same color as the Slat.

FR TM-2501 Off White  
FR/ WR TM-2601



Bottom Rail TM-2501  
Ladder Tape L-001

FR TM-2502 Natural  
FR/ WR TM-2602



Bottom Rail TM-2502  
Ladder Tape L-007

FR TM-2503 Dark Brown  
FR/ WR TM-2603



Bottom Rail TM-2503  
Ladder Tape L-012

FR TM-2504 Deep Brown  
FR/ WR TM-2604



Bottom Rail TM-2504  
Ladder Tape L-015

Bottom Rail and Valance (option) colors are matched with the slat color, but wood grain and texture are different from the slat.

Slat		Common								VENEWOOD
Number	Color	Bottom Rail * Valance (option) *		Head Rail Color	Head Cap Bottom Cover Bracket Cover Color	Operation Cord Color	Ladder Cord Color	Ladder Tape		Lift Tape Color
		Number	Color					Number	Color	
FR	TM-2501 Off White	TM-2501 (TM-2007)	Off White (Off White)	White	White	White	White	L-001	White	White
	TM-2502 Natural	TM-2502 (TM-2009)	Natural (Natural)	Beige	Beige	Beige	Sand	L-007	Butter Scotch	Beige
	TM-2503 Dark Brown	TM-2503 (TM-2014)	Dark Brown (Antique Brown)	Dark Brown	Dark Brown	Dark Brown	Cocoa	L-012	Cocoa	Dark Brown
	TM-2504 Deep Brown	TM-2504 (TM-2016)	Deep Brown (Bitter Brown)	Deep Brown	Deep Brown	Deep Brown	Cocoa	L-015	Charcoal Brown	Deep Brown
FR/ WR	TM-2601 Off White	TM-2501	Off White	White	White	White	White	—	—	White
	TM-2602 Natural	TM-2502	Natural	Beige	Beige	Beige	Sand	—	—	Beige
	TM-2603 Dark Brown	TM-2503	Dark Brown	Dark Brown	Dark Brown	Dark Brown	Cocoa	—	—	Dark Brown
	TM-2604 Deep Brown	TM-2504	Deep Brown	Deep Brown	Deep Brown	Deep Brown	Cocoa	—	—	Deep Brown

\*( ) are the Valance (option) color for FR.

\*The Valance (option) is not available for FR/ WR.



## Operation System

### VENEWOOD (Loop Cord Type)



With one cord, raising/lowering slats and tilting are available.

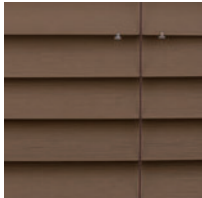
FR → page 26 or 28

FR/ WR → page 26

### Ladder Type

Choose Ladder Cord or Ladder Tape.

\*The Ladder Tape is not available for FR/ WR.



Ladder Cord



Ladder Tape

### Valance (option)

Additional Charge

Valance covers the Head Rail.

\*Standard type is without Valance.

\*Possible to specify Valance (option) only when ordering.

\*The Valance is not available for FR/ WR.

→ page 24



### Ladder Tape Color Lineup

\*Possible to choose colors other than the standard combination.



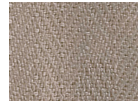
L-001  
White



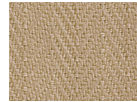
L-002  
Smoke White



L-018  
Light Beige



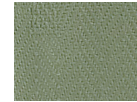
L-005  
Sand Beige



L-004  
Dark Beige



L-007  
Butter Scotch



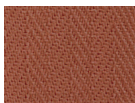
L-010  
Leaf Green



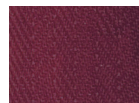
L-015  
Charcoal Brown



L-009  
Rose



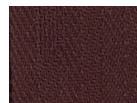
L-014  
Red Brown



L-013  
Maroon



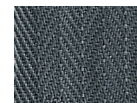
L-011  
Coffee Brown



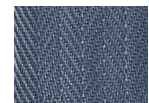
L-012  
Cocoa



L-008  
Silver Gray



L-016  
Dark Gray



L-017  
Dark Blue

## Features

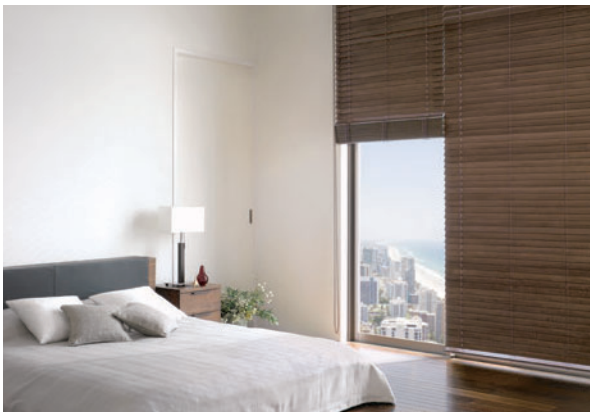
FR

### Ideal for high-rise residences

These wood grain blinds are treated with a Fire Retardant.

The water resistance function is omitted to keep the price lower.

An ideal selection for high-rise residences.



VENEWOOD 50 FR, TM-2503 Dark Brown

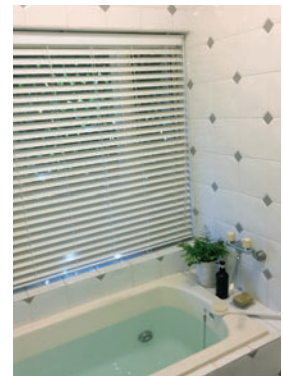
FR/ WR

### Luxury bathroom

Wood grain blinds with Fire Retardant and Water Resistant properties are a good choice for hotel bathrooms, as well residences. They add an elegant touch in luxury spaces for relaxing and healing.



VENEWOOD 50 FR/ WR,  
TM-2602 Natural



VENEWOOD 50 FR/ WR,  
TM-2601 Off White

# WAVE Series

## Standard Combination for Parts Color

\*Ladder Cord of the same color as the Slat.

\*Valance color is Bottom Rail color same.

TM-2009 Natural



Bottom Rail TM-2009

TM-2012 Grayish Brown



Bottom Rail TM-2012

TM-2014 Antique Brown



Bottom Rail TM-2014

Bottom Rail and Valance (option) colors are matched with the slat color, but wood grain and texture are different from the slat.

Slat		Common						VENEWOOD
Number	Color	Bottom Rail * Valance (option) *		Head Rail	Head Cap Bottom Cover Bracket Cover	Operation Cord	Ladder Cord	Lift Tape
		Number	Color	Color	Color	Color	Color	Color
TM-2009	Natural	TM-2009	Natural	Beige	Beige	Beige	Sand	Beige
TM-2012	Grayish Brown	TM-2012	Grayish Brown	Deep Brown	Deep Brown	Deep Brown	Cocoa	Deep Brown
TM-2014	Antique Brown	TM-2014	Antique Brown	Dark Brown	Dark Brown	Dark Brown	Cocoa	Dark Brown

## Operation System

### VENEWOOD (Loop Cord Type)

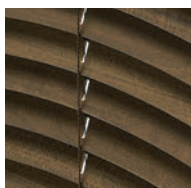


With one cord, raising/lowering slats and tilting are available.

→ page 26

## Ladder Type

For Ladder Cord only.



Ladder Cord



VENEWOOD 50 WAVE style B, TM-2012 Grayish Brown

## Valance (option)

Additional Charge

Valance covers the Head Rail.

\*Standard type is without Valance.

\*Possible to specify Valance (option) only when ordering.



→ page 24

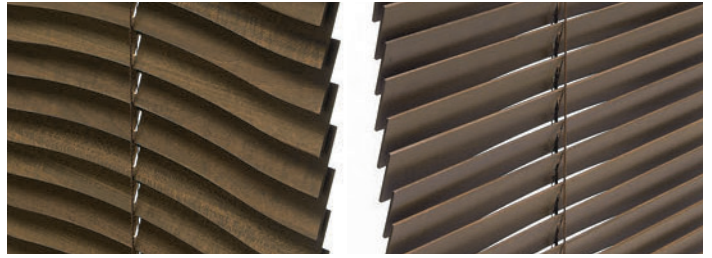


## Cool and Stylish Design for Slats

We overturned the conventional wisdom in blind design.

The dynamic wave slat acts like a wooden curtain.

A great installation to bring uniqueness into a space.



Room side: wave

Window side: no wave (straight line)



Slats fully closed

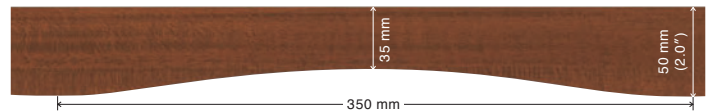
Slats open

## Selectable 2-style Slat

The wave slat has two shapes: Style A with a loose wave and Style B with highlighted wave. Choose according to the width of your window and the design of your interior.

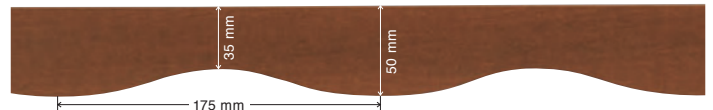
style A

Wave pitch: 350 mm

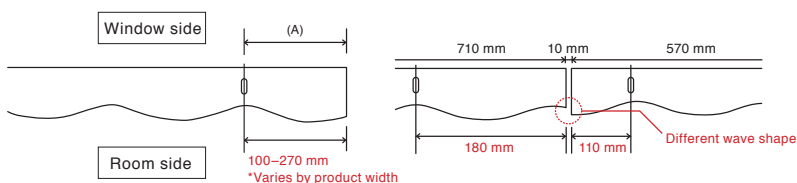


style B

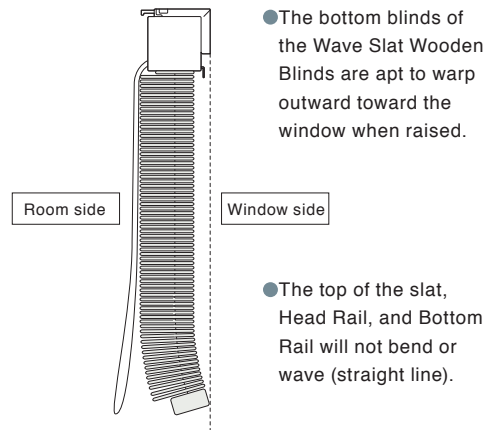
Wave pitch: 175 mm



- Depending on the product width, the dimension from the end of the slat to the ladder cord (lifting tape) (A) may change. If installing products of different widths side-by-side, note that the wave shape at the end of the slat will differ.



When installing two Style B products side-by-side: product width 710 mm and product width 570 mm.



# For Partition Use

## Outline for Partition Use

Specify “For Partition Use” when you have needs for dividing a room or for opening the divider, depending on situations.

Additional Charge: None

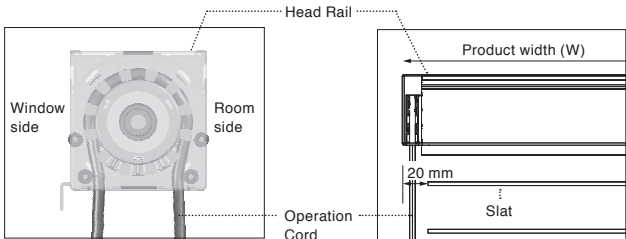
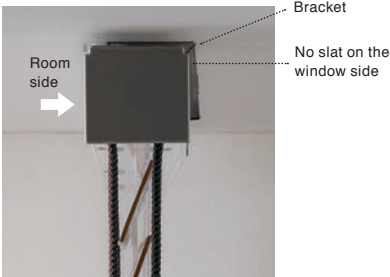
STANDARD	PAULOWNIA, EARTH, VINTAGE	COLT	FR	FR/ WR	WAVE
○	○	×	○	○	×



Front: VENEWOOD 50 STANDARD, TM-2003 Grayish Mocha, Option: For Partition Use  
Back: VENEWOOD 50 VINTAGE, TM-2302 Vintage Blue

## Structure

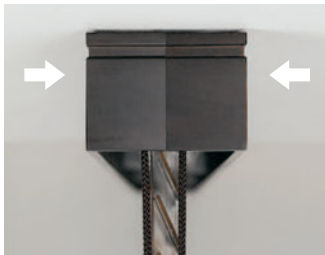
“For Partition Use” with shorten the operational side slat by 20 mm and with the Operation Cord hanging down right under the Head Rail. Therefore, the Head Rail has two Valances on both side, making it reversible.



### Back-side Valance Set

Additional Charge

With an optional Back-side Valance Set (additional charge), the Head Rail has two Valances on both side, making it reversible. See page 25 for details.



## Options

# Two-on-One Head Rail Blind Set

### Outline for Two-on-One Head Rail Blind Set

Two blinds on one Head Rail with separate control is available.  
The price is lower than the two.

Additional Charge: + ¥10,000 (tax separate)



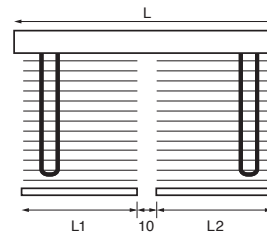
VENEWOOD 50 COLT, TM-2401 White, Option: Two-on-One Head Rail Blind Set

STANDARD	PAULOWNIA, EARTH, VINTAGE	COLT	FR	FR/WR	WAVE
○*	○*	○*	×	×	×

\*VENEWOOD 50T and the ladder tape type are not available.

### Allowable Size

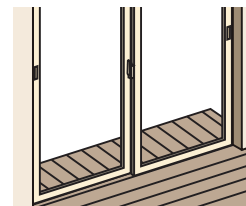
$L1 \geq 600 \text{ mm}$   
 $L2 \geq 600 \text{ mm}$   
 $1,210 \text{ mm} \leq L1+L2+10 \leq 2,400 \text{ mm}$



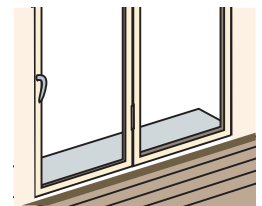
\*The gap between the left and right blinds is 10 mm.

\*Available for the product width in the 10 mm unit.

Suitable for such a place as:



A sliding patio door that opens into the balcony or the garden



When only one panel opens

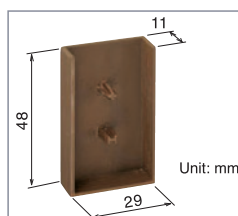
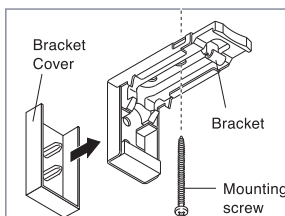
## Options

# Bracket Cover

### Outline for Bracket Cover

Covers the metal color of the bracket.

Looks good when the attachment is positioned inside the window frame or for partition use.



Bracket Cover  
¥120 / 1 pc  
(tax separate)

Color:  
white, gray, beige,  
soft brown,  
dark brown,  
deep brown

Unit: mm

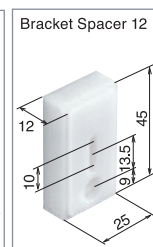
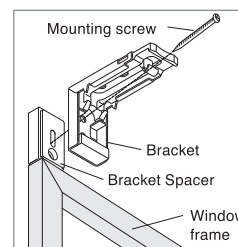
\*The Bracket Cover is provided without charge if you request it when ordering your products. Matches the color of the Head Rail.

## Options

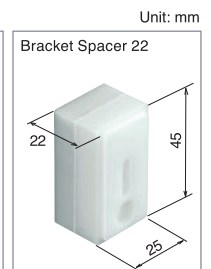
# Bracket Spacer

### Outline for Bracket Spacer

Fills a gap between the wall and window frame for an outside mount.



Bracket Spacer 12  
¥190 / 1 pc  
(tax separate)  
(Pan screw  
3.5 x 40: 2 pcs)



Bracket Spacer 22 (\*)  
¥200 / 1 pc  
(tax separate)  
(Pan screw  
3.5 x 50: 2 pcs)  
\*Use two Bracket  
Spacer 12s in layers.

Unit: mm

# Color Combination

## Outline for Color Combination

“Color Combination”, particular to venetians, is also available.  
Select your favorite color of Slats and each part and make your own blind.

Additional Charge: 10% up from the product price

\*Less than 100 yen are rounded

STANDARD	PAULOWNIA, VINTAGE	EARTH	COLT	FR	FR/ WR	WAVE
○	○	×	○	×	×	×

\*Color Combination is only available to slats within the same series.  
Impossible to combine slats of different series.



VENEWOOD 50 VINTAGE, TM-2301 Smoky White, TM-2302 Vintage Blue, TM-2303 Mocha, Option: Color Combination and Valance

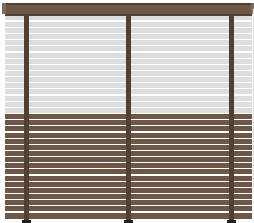


VENEWOOD 50T STANDARD, TM-2010 Cherry, TM-2013 Soft Brown, Option: Color Combination and Valance

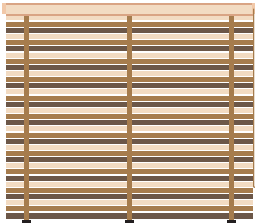


VENEWOOD 50 COLT, TM-2401 White, TM-2402 Distressed Gray, TM-2405 Natural Grain, Option: Color Combination and Valance

### Color Combination Plan Examples



2-tone coloring with different colors for the upper and the lower.



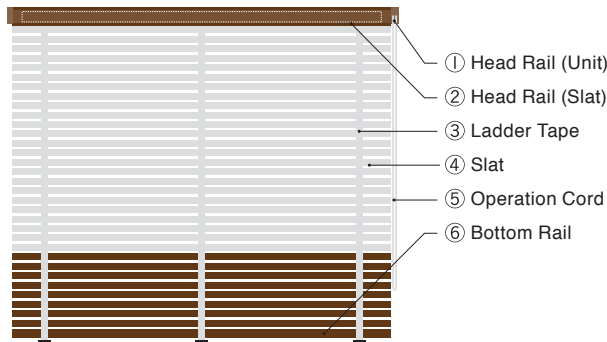
Make a horizontal stripe with 3 different colors.



Change Valance (Option) and Bottom Rail colors to give an accent.

### Require Specified for Components Color

Color combination requires specifying the Slat and the part colors.



### Color Combination for Available

Products		VENEWOOD 50, 50T VENEWOOD TOUCH 50, 50T
Series		STANDARD PAULOWNIA VINTAGE COLT
Allowable Size	Product Width	Conform for each series
	Product Height	
	Maximum Area	

\*Color Combination is only available to slats within the same series.  
Impossible to combine slats of different series.



## How to Order for Color Combination

Please use the order form of page 40, when placing an order

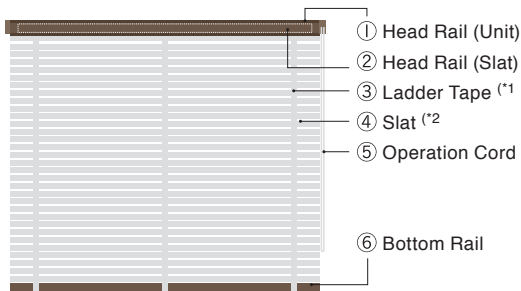
### STEP ① Choose the product.

- |  |                   |
|--|-------------------|
| <input type="checkbox"/> VENEWOOD 50 (Loop Cord Type, Ladder Cord Type)                | Color Combination |
| <input type="checkbox"/> VENEWOOD 50T (Loop Cord Type, Ladder Tape Type)               | Color Combination |
| <input type="checkbox"/> VENEWOOD TOUCH 50 (One-touch Closing Type, Ladder Cord Type)  | Color Combination |
| <input type="checkbox"/> VENEWOOD TOUCH 50T (One-touch Closing Type, Ladder Tape Type) | Color Combination |

### STEP ② Choose the Slat color and the other part colors.

Attention: Color combination requires you to specify each part color ( ① – ⑥ ) as well as Slat colors.

\*About part color, refer to Standard Combination Table for each products.



(\*1: Specify the Ladder Tape only when order for Ladder Tape Type.  
(\*2: Impossible to combine different slats of the Series (STANDARD/PAULOWNIA/VINTAGE/COLT).

\*For ordering, round down the nearest 5 mm in width and, 10 mm in height.

\*Please note that, due to the product characteristics, the product height might have a certain margin of error.

### STEP ③ Specify the dimensions of the product.

\*Refer to Estimation of Finished Product Height below the price list for each series.

### STEP ④ Specify the control position.

- ☐ Left      ☐ Right

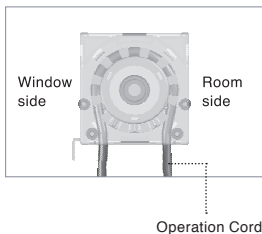
### STEP ⑤ Specify if you would like the Valance (Additional Charge)

- ☐ Type C      ☐ Type I (for inside)      ☐ Type I (for outside)      ☐ Back-side Valance Set  
☐ Type L (for left)      ☐ Type L (for right)      ☐ Special order (Specify the size for a special order type)

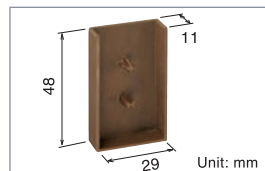
\*Refer to pages 24 to 25 for details of the Valance. \*The Valance is none on the standard.

### STEP ⑥ Specify optional parts if necessary.

- ☐ Partition Use  
▶▶ page 20

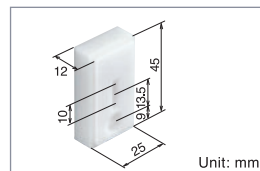


- ☐ Bracket Cover  
▶▶ page 21



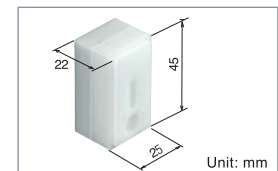
\*Bracket Cover will be offered free if you specified when ordering products. It will match the color of Head Rail.

- ☐ Bracket Spacer 12  
▶▶ page 21



Bracket Spacer 12  
¥190 /1 pc (tax separate)  
(Pan screw 3.5 x 40: 2 pcs)

- ☐ Bracket Spacer 22  
▶▶ page 21



Bracket Spacer 22 (\*)  
¥200 /1 pc (tax separate)  
(Pan screw 3.5 x 50: 2 pcs)  
\*Use two Bracket Spacer 12s in layers.

\*When you want to have several blinds side by side, specify the blinds are a type for blinds "side by side".

\*If you specify "side by side", we will ship the blind sets with the same number of slats.

However, there may be differences in the position of adjacent slats due to elongation, etc.

### STEP ⑦ Specify the quantity.

## Options

# Valance

Installing the Valance covering the Head Rail at the top of the blind will be a window with more refined.

Additional Charge: Refer to each type

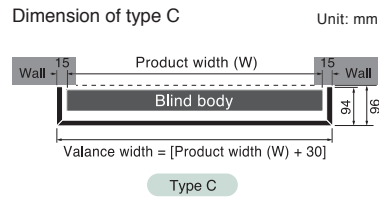
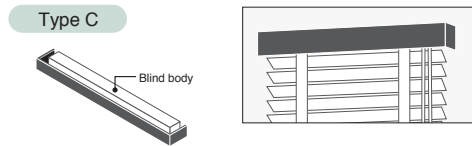
STANDARD	PAULOWNIA, EARTH, VINTAGE	COLT	FR	FR/ WR	WAVE
○	○	×	○	×	○

## Standard

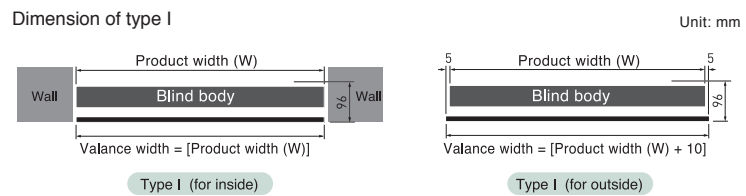
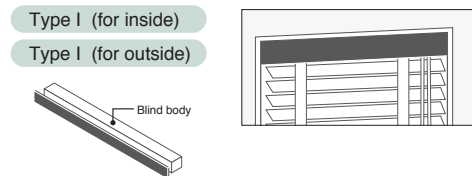
Specify the product width and choose the model of the Valance suitable for the installation location. We offer the Valance for suitable size.

## Types and Dimensions

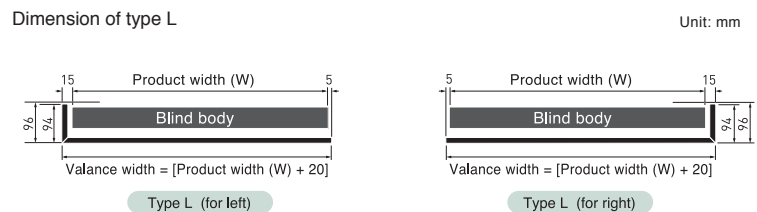
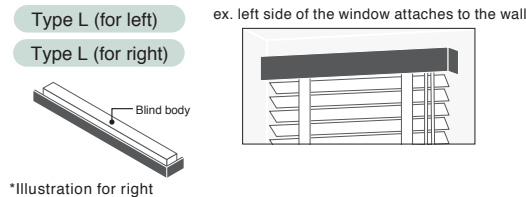
Wall Attachment for outside of the window frame



Ceiling Attachment for inside of the window frame



One side of the window attaches to the wall



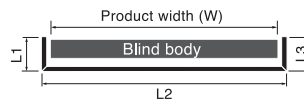
Price	Product width (mm)	350-1,000	1,005-1,600	1,605-2,000	2,005-2,400
	Price (excluding tax)	¥1,100	¥1,700	¥2,200	¥2,800

(both standard and custom order common)

\*Additional price to the product price.

## Custom Order

Possible to specify the dimensions of L1, L2, L3 in units of 1 mm. The price is the same as standard.



Possible to specify in the range of  
 40 mm ≤ L1 ≤ 190 mm  
 350 mm ≤ L2 ≤ 2,430 mm  
 40 mm ≤ L3 ≤ 190 mm

## Valance Color Combination Table

Series	Slat		Valance	
	Number	Color	Number	Color
STANDARD	TM-2001	Pure White	TM-2001	Pure White
	TM-2002	Shabby White	TM-2007	Off White
	TM-2003	Grayish Mocha	TM-2009	Natural
	TM-2004	Grayish Natural	TM-2004	Grayish Natural
	TM-2005	Cork Beige	TM-2005	Cork Beige
	TM-2006	Matt Gray	TM-2006	Matt Gray
	TM-2007	Off White	TM-2007	Off White
	TM-2008	Antique White	TM-2008	Antique White
	TM-2009	Natural	TM-2009	Natural
	TM-2010	Cherry	TM-2010	Cherry
	TM-2011	Dark Brown	TM-2011	Dark Brown
	TM-2012	Grayish Brown	TM-2012	Grayish Brown
	TM-2013	Soft Brown	TM-2013	Soft Brown
	TM-2014	Antique Brown	TM-2014	Antique Brown
	TM-2015	Deep Brown	TM-2015	Deep Brown
	TM-2016	Bitter Brown	TM-2016	Bitter Brown

Series	Slat		Valance	
	Number	Color	Number	Color
PAULOWNIA	TM-2101	Kinari	TM-2009	Natural
	TM-2102	Fushi	TM-2004	Grayish Natural
EARTH	TM-2201	Natural Wood	TM-2009	Natural
	TM-2301	Smoky White	TM-2007	Off White
VINTAGE	TM-2302	Vintage Blue	TM-2007	Off White
	TM-2303	Mocha	TM-2005	Cork Beige
	TM-2304	Rustic Beige	TM-2005	Cork Beige
	TM-2305	Brick Brown	TM-2014	Antique Brown
	TM-2306	Dark Clove	TM-2306	Dark Clove
FR	TM-2501	Off White	TM-2007	Off White
	TM-2502	Natural	TM-2009	Natural
	TM-2503	Dark Brown	TM-2014	Antique Brown
	TM-2504	Deep Brown	TM-2016	Bitter Brown
WAVE	TM-2009	Natural	TM-2009	Natural
	TM-2012	Grayish Brown	TM-2012	Grayish Brown
	TM-2014	Antique Brown	TM-2014	Antique Brown

\*The Valance color is matched with the slat color, but wood grain and texture are different from the slat.

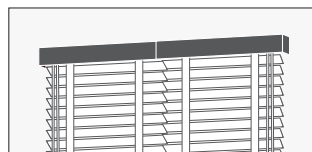


## Side by Side

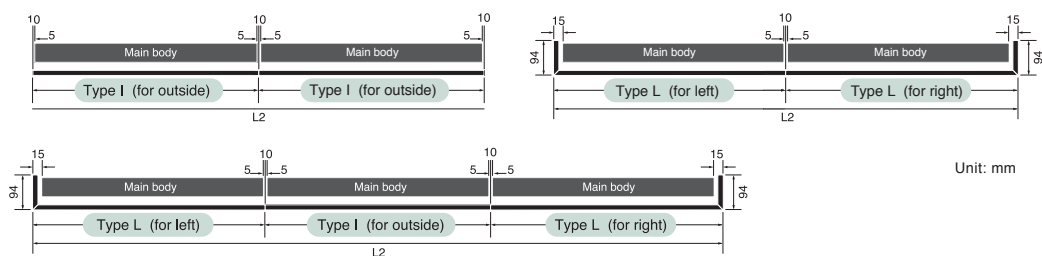
“Side by side” is to install multiple units continuously. Order by combining I type and L type. When ordering, specify “side by side” and order with drawing so that we can understand the positional relationship between the Main Unit and the Valance.

\*Leave 10 mm between the blind body.

\*When combining two or more Valances, because it uses natural wood, there may be variations in color and slight deviation may appear in the joint part.



## Example of Combination



### Price

(Side by side)

Product width (mm)	350-1,000	1,005-1,600	1,605-2,000	2,005-2,400
1 unit Price (excluding tax)	¥1,100	¥1,700	¥2,200	¥2,800

\*Additional price to the product main unit price.

× Product Number

### For 1 Valance

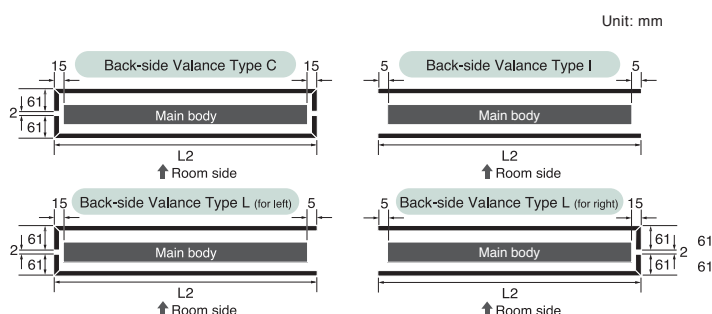
Width L2 (mm)	710-2,430
Price (excluding tax)	¥4,400

\*Price for 1 Valance.

\*L2 is 2,430 mm or less only.

## Back-side Valance Set

The Head Rail has two Valances on both side, suitable for partition use.



### Price

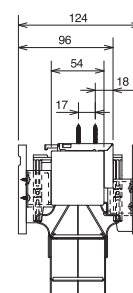
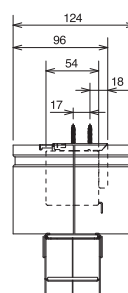
Width L2 (mm)	350-1,000	1,005-1,600	1,605-2,000	2,005-2,430
Price (excluding tax)	¥2,200	¥3,400	¥4,400	¥5,600

\*Additional price to the product main unit price.



Back-side Valance Type C

Back-side Valance Type I



Unit: mm

### • Add-on Valance

The Valance after purchasing the main unit, or when ordering separately from the main unit. Specify the dimensions of L1, L2, L3 in units of 1 mm.

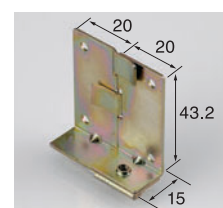
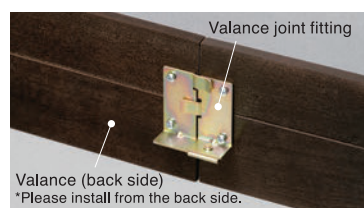
**\*If the slat is affixed to the Head Rail, the Valance cannot be added-on.**

Width L2 (mm)	350-1,000	1,005-1,600	1,605-2,000	2,005-2,430
Price (excluding tax)	¥9,400	¥11,000	¥13,200	¥16,000

### • Valance Joint Fitting

If you can specify when ordering, we will serve balanced joint fittings. Specify as you need it.

Unit: mm



# VENEWOOD 50



STANDARD	PAULOWNIA, EARTH, VINTAGE	COLT	FR	FR/ WR	WAVE
<input type="radio"/>	<input type="radio"/>	<input type="radio"/>	<input type="radio"/>	<input type="radio"/>	<input type="radio"/>

## Structure Drawing

### Overview

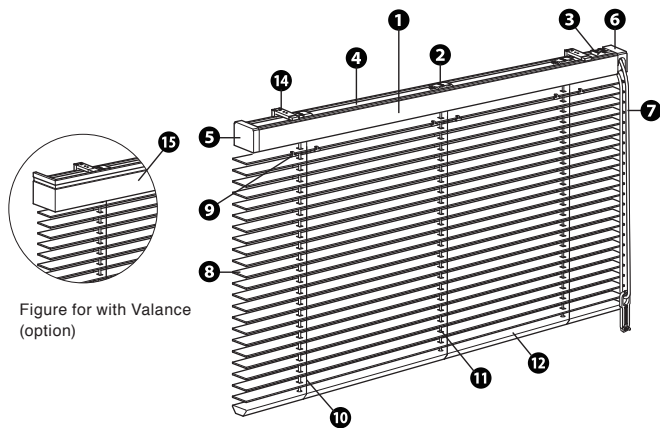


Figure for with Valance (option)

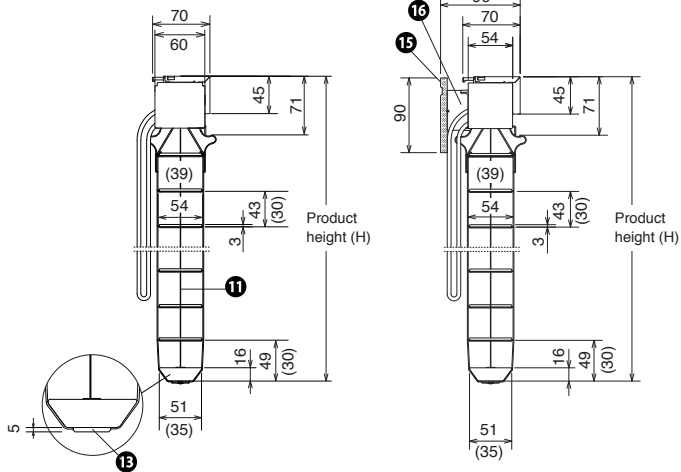
Components	Material
1 Head Rail	Aluminum alloy
2 Drum	Molded resin, Metal processed material
3 Gear Box	Molded resin, Metal processed material
4 Shaft	Steel (for FR/ WR are stainless steel)
5 Head Cap	Molded resin
6 Pulley Cover	Molded resin
7 Operation Cord	Chemical fiber
8 Slat	STANDARD, EARTH, VINTAGE, WAVE Basswood PAULOWNIA Paulownia COLT Hardwood (Broadleaf tree) FR, FR /WR Extruded resin
9 Slat Clip	Molded resin
10 Ladder Cord	Chemical fiber
11 Lift Tape	Chemical fiber
12 Bottom Rail	STANDARD, PAULOWNIA, EARTH, VINTAGE, WAVE Basswood COLT Basswood or Hardwood (Broadleaf tree) FR, FR /WR Extruded resin
13 Bottom Cover	Molded resin
14 Bracket	Stainless steel, Molded resin
15 Valance (Option)	Basswood
16 Valance Bracket (Option)	Molded resin

### Side View

(Unit: mm)

#### Standard: without Valance

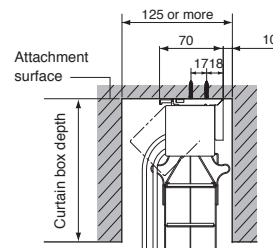
#### Option: with Valance



\*( ): for WAVE

### View in the Curtain Box

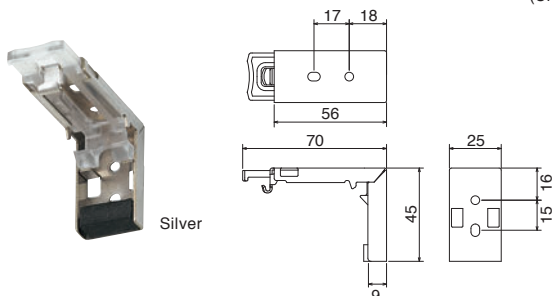
(Unit: mm)



When attachment inside the curtain box, use without Valance.

### Bracket (include)

(Unit: mm)



Silver

Product Width (W)	The Number of Bracket
350–1,200 mm*	2
1,205–2,400 mm	3

\*Product width of Wave is 550–1,200 mm.

### Option

#### Specification

Partition	page 20
Two-on-One Head Rail Blind Set	page 21
Valance	page 24–25

\*Refer to each option page for available slat.

#### Component

Bracket Cover	page 21
Bracket Spacer	page 21

## Allowable Size

	STANDARD, EARTH, VINTAGE, COLT	PAULOWNIA
Product Width (W)	350–2,400 mm	350–2,400 mm
Product Height (H)	500–3,000 mm	500–3,000 mm
Maximum Area	6 m <sup>2</sup>	7.2 m <sup>2</sup>

	FR, FR/ WR	WAVE
Product Width (W)	350–2,400 mm	550–1,940 mm
Product Height (H)	500–3,000 mm	500–2,500 mm
Maximum Area	4 m <sup>2</sup>	4 m <sup>2</sup>

\*When the product width is 500 mm or less, the maximum height is 2,200 mm.

\*For ordering, round down the nearest 5 mm in width.

\*For ordering, round down the nearest 10 mm in height, refer to Estimation of Finished Product Height below the price list for each series.

\*Please note that, due to the product characteristics, the product height might have a certain margin of error.

## The Number of Ladder Cords and Lift Tapes

STANDARD, PAULOWNIA, EARTH, VINTAGE, COLT, WAVE

Product Width (W)		Ladder Cords	Lift Tapes
Except Wave	Wave		
350–800 mm	550–890 mm	2	2
805–1,200 mm	895–1,240 mm	3	2
1,205–1,600 mm	1,245–1,590 mm	4	2
1,605–2,400 mm	1,595–1,940 mm	5	3

FR, FR/ WR

Product Width (W)	Ladder Cords	Lift Tapes
350–530 mm	2	2
535–830 mm	3	2
835–1,430 mm	5	3
1,435–2,030 mm	7	4
2,035–2,400 mm	9	5

## Stack-up Guide

Calculation formula

STANDARD, PAULOWNIA, EARTH, VINTAGE, FR, FR/ WR	Finished Product Height (H) × 0.08 + 80 mm
COLT	Finished Product Height (H) × 0.067 + 80 mm
WAVE	Finished Product Height (H) × 0.11 + 80 mm

Dimension guide

(Unit: mm)

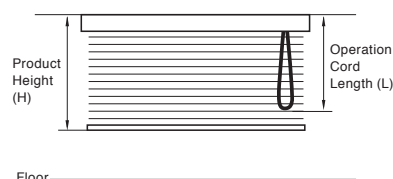
Finished Product Height (H)	1,000	1,430	1,820	2,210	2,600	3,020
STANDARD, PAULOWNIA, EARTH, VINTAGE, FR, FR/ WR	160	194	226	257	288	322
COLT	147	176	202	228	254	282
WAVE	190	237	280	323	366	412

## Product Weight Guide

Product Width × Product Height	STANDARD	PAULOWNIA	EARTH	VINTAGE
900 × 1,390 mm	3.8 kg	2.9 kg	3.8 kg	3.8 kg
1,800 × 1,390 mm	7.2 kg	5.4 kg	7.2 kg	7.2 kg
1,800 × 1,820 mm	8.5 kg	6.1 kg	8.5 kg	8.5 kg
2,000 × 1,990 mm	9.8 kg	6.8 kg	9.8 kg	9.8 kg

Product Width × Product Height	COLT	FR, FR/ WR	WAVE
900 × 1,390 mm	3.8 kg	4.8 kg	4.2 kg
1,800 × 1,390 mm	7.2 kg	9.2 kg	7.8 kg
1,800 × 1,820 mm	8.5 kg	11.3 kg	9.4 kg
2,000 × 1,990 mm	9.8 kg	13.1 kg	10.9 kg

## Operation Cord Length



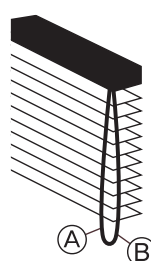
[Product Height (H)]  
From the top of the Bracket  
(or of the Valance) to the  
bottom of the Bottom Rail

[Operation Cord Length (L)]  
From the top of the Bracket  
(or of the Valance) to the lowest  
point of the Operation Cord

Product Height (H)	Operation Cord Length (L)
–790 mm	650 mm
800–1,000 mm	750 mm
1,010–1,180 mm	900 mm
1,190–1,390 mm	1,100 mm
1,400–1,560 mm	1,300 mm
1,570–1,780 mm	1,400 mm
1,790–2,170 mm	1,600 mm
2,180–2,600 mm	1,800 mm
2,610–2,770 mm	2,000 mm
2,780–3,000 mm	2,200 mm

\*When attachment in a position  
higher than the product height,  
such as high windows, specify  
separately the Operation Cord  
Length in units of 10 mm.

## Operation Method



[Lowering the blind]

Pull down the ① side of the Cord, and then release at the  
desired position to hold.

[Lifting the blind]

Pull down the ② side of the Cord, and then release at the  
desired position to hold.

[Adjusting a Slat angle]

Pull down the ① side or the ② side for adjusting.



### Warning

Avoid getting entangled or caught in the Cord  
or Chain. It may lead to a hazardous accident.

Japan Window  
Blind Association



日本ブラインド工業会



### Warning

In a family they have small children, do not place  
the sofa or bed close to the cord or chain of blind or  
screen. Their hands will reach if children climb the  
sofa or bed, accident risks will increase.

Japan Window  
Blind Association



日本ブラインド工業会

## Others

Refer to page 34–35 for installation method, how to take measurements and  
height adjustment method.

# VENEWOOD 50T



STANDARD	PAULOWNIA, EARTH, VINTAGE	COLT	FR	FR/ WR	WAVE
○	○	○	○	×	×

## Structure Drawing

### Overview

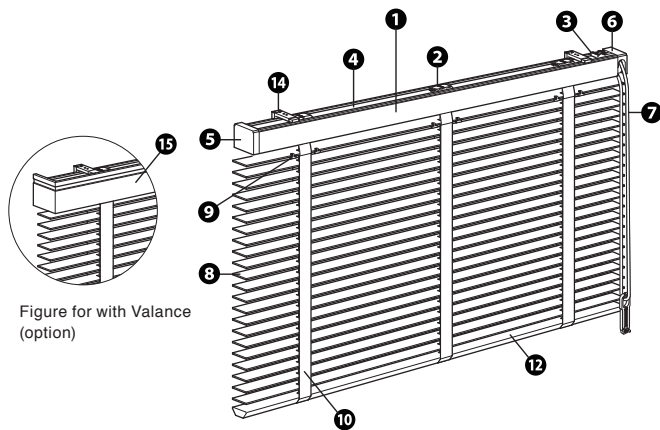


Figure for with Valance (option)

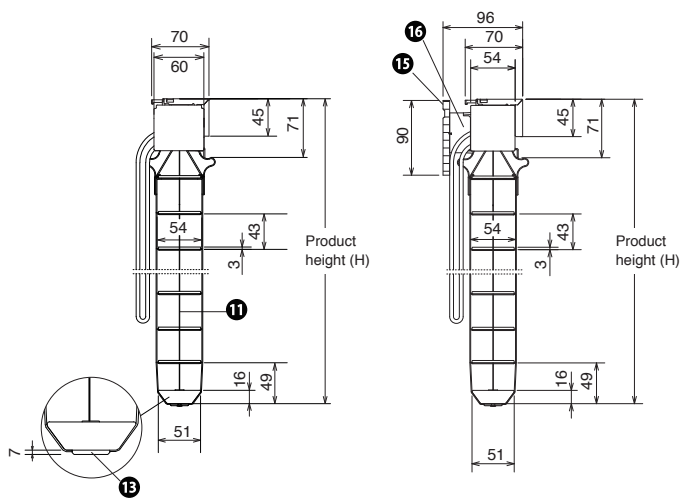
Components	Material
1 Head Rail	Aluminum alloy
2 Drum	Molded resin, Metal processed material
3 Gear Box	Molded resin, Metal processed material
4 Shaft	Steel
5 Head Cap	Molded resin
6 Pulley Cover	Molded resin
7 Operation Cord	Chemical fiber
8 Slat	STANDARD, EARTH, VINTAGE Basswood
	PAULOWNIA Paulownia
	COLT Hardwood (Broadleaf tree)
	FR Extruded resin
9 Slat Clip	Molded resin
10 Ladder Tape	Chemical fiber
11 Lift Tape	Chemical fiber
12 Bottom Rail	STANDARD, PAULOWNIA, EARTH, VINTAGE Basswood
	COLT Basswood or Hardwood (Broadleaf tree)
	FR Extruded resin
13 Bottom Cover	Molded resin
14 Bracket	Stainless steel, Molded resin
15 Valance (Option)	Basswood
16 Valance Bracket (Option)	Molded resin

### Side View

(Unit: mm)

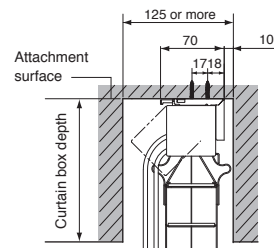
#### Standard: without Valance

#### Option: with Valance



### View in the Curtain Box

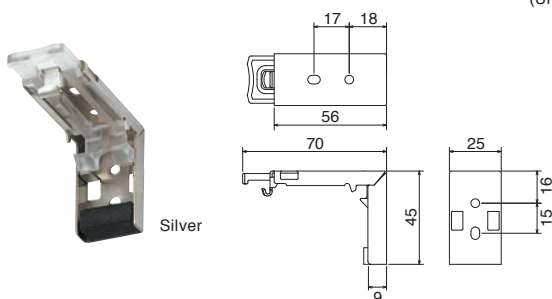
(Unit: mm)



When attachment inside the curtain box, use without Valance.

### Bracket (include)

(Unit: mm)



Product Width (W)	The Number of Bracket
350–1,200 mm	2
1,205–2,400 mm	3

### Option

#### Specification

Partition	page 20
Valance	page 24–25

\*Refer to each option page for available slat.

#### Component

Bracket Cover	page 21
Bracket Spacer	page 21

## Allowable Size

	STANDARD, EARTH, VINTAGE, COLT	PAULOWNIA
Product Width (W)	350–2,400 mm	350–2,400 mm
Product Height (H)	500–3,000 mm	500–3,000 mm
Maximum Area	6 m <sup>2</sup>	7.2 m <sup>2</sup>

	FR
Product Width (W)	350–2,400 mm
Product Height (H)	500–3,000 mm
Maximum Area	4 m <sup>2</sup>

\*When the product width is 500 mm or less, the maximum height is 2,200 mm.

\*For ordering, round down the nearest 5 mm in width.

\*For ordering, round down the nearest 10 mm in height, refer to Estimation of Finished Product Height below the price list for each series.

\*Please note that, due to the product characteristics, the product height might have a certain margin of error.

## The Number of Ladder Tapes and Lift Tapes

STANDARD, PAULOWNIA, EARTH, VINTAGE, COLT

Product Width (W)	Ladder Cords	Lift Tapes
350–800 mm	2	2
805–1,200 mm	3	2
1,205–1,600 mm	4	2
1,605–2,400 mm	5	3

FR

Product Width (W)	Ladder Cords	Lift Tapes
350–530 mm	2	2
535–830 mm	3	2
835–1,430 mm	5	3
1,435–2,030 mm	7	4
2,035–2,400 mm	9	5

## Stack-up Guide

Calculation formula

STANDARD, PAULOWNIA, EARTH, VINTAGE, FR	Finished Product Height (H) × 0.1 + 80 mm
COLT	Finished Product Height (H) × 0.078 + 80 mm

Dimension guide

(Unit: mm)

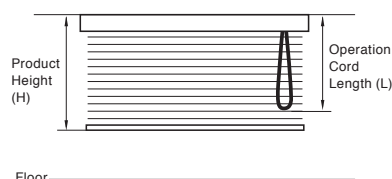
Finished Product Height (H)	1,000	1,430	1,820	2,210	2,600	3,020
STANDARD, PAULOWNIA, EARTH, VINTAGE, FR	180	223	262	301	340	382
COLT	158	192	222	252	283	316

## Product Weight Guide

Product Width × Product Height	STANDARD	PAULOWNIA	EARTH	VINTAGE
900 × 1,390 mm	3.8 kg	2.9 kg	3.8 kg	3.8 kg
1,800 × 1,390 mm	7.2 kg	5.4 kg	7.2 kg	7.2 kg
1,800 × 1,820 mm	8.5 kg	6.1 kg	8.5 kg	8.5 kg
2,000 × 1,990 mm	9.8 kg	6.8 kg	9.8 kg	9.8 kg

Product Width × Product Height	COLT	FR
900 × 1,390 mm	3.8 kg	4.8 kg
1,800 × 1,390 mm	7.2 kg	9.2 kg
1,800 × 1,820 mm	8.5 kg	11.3 kg
2,000 × 1,990 mm	9.8 kg	13.1 kg

## Operation Cord Length



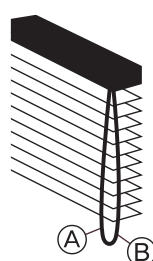
[Product Height (H)]  
From the top of the Bracket  
(or of the Valance) to the  
bottom of the Bottom Rail

[Operation Cord Length (L)]  
From the top of the Bracket  
(or of the Valance) to the lowest  
point of the Operation Cord

Product Height (H)	Operation Cord Length (L)
–790 mm	650 mm
800–1,000 mm	750 mm
1,010–1,180 mm	900 mm
1,190–1,390 mm	1,100 mm
1,400–1,560 mm	1,300 mm
1,570–1,780 mm	1,400 mm
1,790–2,170 mm	1,600 mm
2,180–2,600 mm	1,800 mm
2,610–2,770 mm	2,000 mm
2,780–3,000 mm	2,200 mm

\*When attachment in a position  
higher than the product height,  
such as high windows, specify  
separately the Operation Cord  
Length in units of 10 mm.

## Operation Method



[Lowering the blind]

Pull down the ① side of the Cord, and then release at the  
desired position to hold.

[Lifting the blind]

Pull down the ② side of the Cord, and then release at the  
desired position to hold.

[Adjusting a Slat angle]

Pull down the ① side or the ② side for adjusting.



### Warning

Avoid getting entangled or caught in the Cord  
or Chain. It may lead to a hazardous accident.

Japan Window  
Blind Association



日本ブラインド工業会



### Warning

In a family they have small children, do not place  
the sofa or bed close to the cord or chain of blind or  
screen. Their hands will reach if children climb the  
sofa or bed, accident risks will increase.

Japan Window  
Blind Association



日本ブラインド工業会

## Others

Refer to page 34–35 for installation method, how to take measurements and  
height adjustment method.

# VENEWOOD TOUCH 50



STANDARD	PAULOWNIA, EARTH, VINTAGE	COLT	FR	FR/ WR	WAVE
○	○	○	×	×	×

## Structure Drawing

### Overview

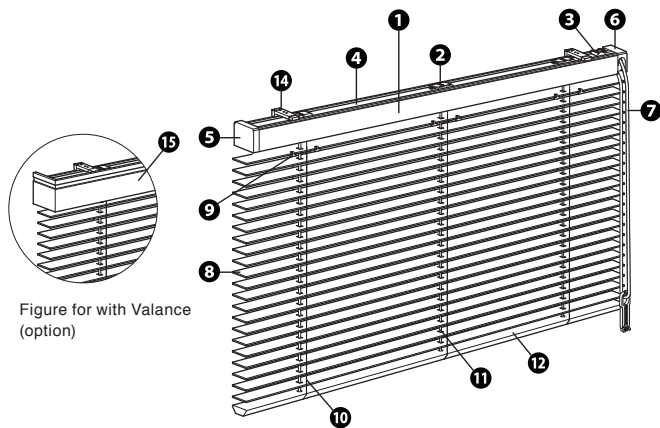


Figure for with Valance (option)

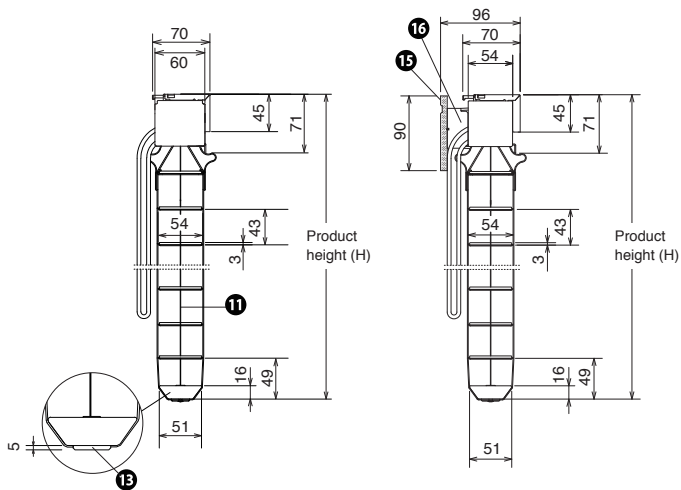
Components	Material
1 Head Rail	Aluminum alloy
2 Drum	Molded resin, Metal processed material
3 Gear Box	Molded resin, Metal processed material
4 Shaft	Steel
5 Head Cap	Molded resin
6 Pulley Cover	Molded resin
7 Operation Cord	Chemical fiber
8 Slat *Slat is affixed to the front of the Head Rail	STANDARD, EARTH, VINTAGE Basswood PAULOWNIA Paulownia COLT Hardwood (Broadleaf tree)
9 Slat Clip	Molded resin
10 Ladder Cord	Chemical fiber
11 Lift Cord	Chemical fiber
12 Bottom Rail	STANDARD, PAULOWNIA, EARTH, VINTAGE Basswood COLT Basswood or Hardwood (Broadleaf tree)
13 Bottom Cover	Molded resin
14 Bracket	Stainless steel, Molded resin
15 Valance (Option)	Basswood
16 Valance Bracket (Option)	Molded resin

### Side View

(Unit: mm)

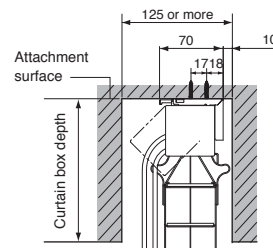
#### Standard: without Valance

#### Option: with Valance



### View in the Curtain Box

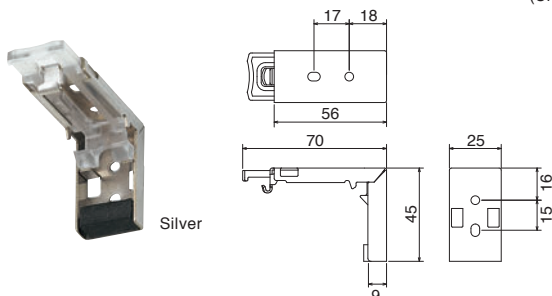
(Unit: mm)



When attachment inside the curtain box, use without Valance.

### Bracket (include)

(Unit: mm)



Product Width (W)	The Number of Bracket
640-1,200 mm	2
1,205-2,400 mm	3

### Option

#### Specification

Partition	page 20
Valance	page 24-25

\*Refer to each option page for available slat.

#### Component

Bracket Cover	page 21
Bracket Spacer	page 21



## Allowable Size

	STANDARD, EARTH, VINTAGE, COLT	PAULOWNIA
Product Width (W)	640–2,400 mm	640–2,400 mm
Product Height (H)	500–3,000 mm	500–3,000 mm
Maximum Area	5 m <sup>2</sup>	6 m <sup>2</sup>

\*For ordering, round down the nearest 5 mm in width.

\*For ordering, round down the nearest 10 mm in height, refer to Estimation of Finished Product Height below the price list for each series.

\*Please note that, due to the product characteristics, the product height might have a certain margin of error.

## The Number of Ladder Cords and Lift Cords

STANDARD, PAULOWNIA, EARTH, VINTAGE, COLT

Product Width (W)	Ladder Cords	Lift Tapes
640–800 mm	2	2
805–1,200 mm	3	2
1,205–1,600 mm	4	2
1,605–2,400 mm	5	3

## Stack-up Guide

Calculation formula

STANDARD, PAULOWNIA, EARTH, VINTAGE	Finished Product Height (H) × 0.08 + 80 mm
COLT	Finished Product Height (H) × 0.067 + 80 mm

Dimension guide

(Unit: mm)

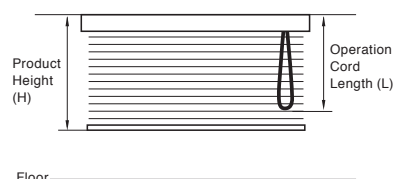
Finished Product Height (H)	1,000	1,430	1,820	2,210	2,600	3,020
STANDARD, PAULOWNIA, EARTH, VINTAGE	160	194	226	257	288	322
COLT	147	176	202	228	254	282

## Product Weight Guide

Product Width × Product Height	STANDARD	PAULOWNIA	EARTH	VINTAGE
900 × 1,390 mm	3.8 kg	2.9 kg	3.8 kg	3.8 kg
1,800 × 1,390 mm	7.2 kg	5.4 kg	7.2 kg	7.2 kg
1,800 × 1,820 mm	8.5 kg	6.1 kg	8.5 kg	8.5 kg
2,000 × 1,990 mm	9.8 kg	6.8 kg	9.8 kg	9.8 kg

Product Width × Product Height	COLT
900 × 1,390 mm	3.8 kg
1,800 × 1,390 mm	7.2 kg
1,800 × 1,820 mm	8.5 kg
2,000 × 1,990 mm	9.8 kg

## Operation Cord Length



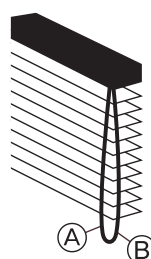
[Product Height (H)]  
From the top of the Bracket  
(or of the Valance) to the  
bottom of the Bottom Rail

[Operation Cord Length (L)]  
From the top of the Bracket  
(or of the Valance) to the lowest  
point of the Operation Cord

Product Height (H)	Operation Cord Length (L)
–790 mm	650 mm
800–1,000 mm	750 mm
1,010–1,180 mm	900 mm
1,190–1,390 mm	1,100 mm
1,400–1,560 mm	1,300 mm
1,570–1,780 mm	1,400 mm
1,790–2,170 mm	1,600 mm
2,180–2,600 mm	1,800 mm
2,610–2,770 mm	2,000 mm
2,780–3,000 mm	2,200 mm

\*When attachment in a position  
higher than the product height,  
such as high windows, specify  
separately the Operation Cord  
Length in units of 10 mm.

## Operation Method



[Lowering the blind]

Pull down the (A) side of the Cord about 40 cm, and  
automatically close the slat.

[Lifting the blind]

Pull down the (B) side of the Cord, and then release at the  
desired position to hold.

[Adjusting a Slat angle]

Pull down the (A) side or the (B) side for adjusting.



### Caution

- \*The Operation Cord will be locked if the Bottom Rail touches an obstacle when lowering. To unlock, pull down the Cord (B) after taking the obstacle away.
- \*The Operation Cord will also be locked when reaching the lowest position but this is just to protect the Lift Tape from reverse winding. It does not fail to operate properly.



### Warning

Avoid getting entangled or caught in the Cord  
or Chain. It may lead to a hazardous accident.

Japan Window  
Blind Association



日本ブラインド工業会



### Warning

In a family they have small children, do not place  
the sofa or bed close to the cord or chain of blind or  
screen. Their hands will reach if children climb the  
sofa or bed, accident risks will increase.

Japan Window  
Blind Association



日本ブラインド工業会

## Others

Refer to page 34–35 for installation method, how to take measurements and height adjustment method.

# VENEWOOD TOUCH 50T



STANDARD	PAULOWNIA, EARTH, VINTAGE	COLT	FR	FR/ WR	WAVE
○	○	○	×	×	×

## Structure Drawing

### Overview

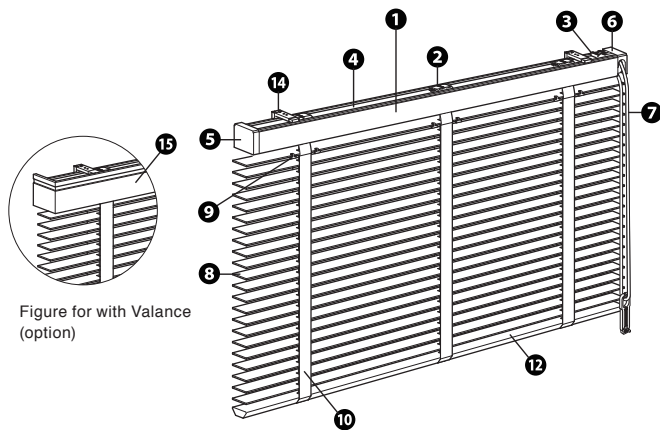


Figure for with Valance (option)

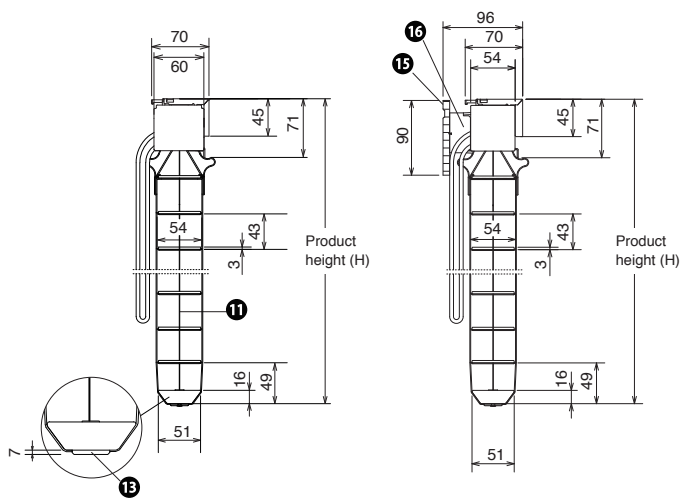
Components	Material
1 Head Rail	Aluminum alloy
2 Drum	Molded resin, Metal processed material
3 Gear Box	Molded resin, Metal processed material
4 Shaft	Steel
5 Head Cap	Molded resin
6 Pulley Cover	Molded resin
7 Operation Cord	Chemical fiber
8 Slat	STANDARD, EARTH, VINTAGE Basswood
	PAULOWNIA Paulownia
	COLT Hardwood (Broadleaf tree)
9 Slat Clip	Molded resin
10 Ladder Tape	Chemical fiber
11 Lift Cord	Chemical fiber
12 Bottom Rail	STANDARD, PAULOWNIA, EARTH, VINTAGE Basswood
	COLT Basswood or Hardwood (Broadleaf tree)
13 Bottom Cover	Molded resin
14 Bracket	Stainless steel, Molded resin
15 Valance (Option)	Basswood
16 Valance Bracket (Option)	Molded resin

### Side View

(Unit: mm)

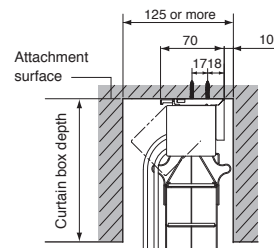
Standard: without Valance

Option: with Valance



### View in the Curtain Box

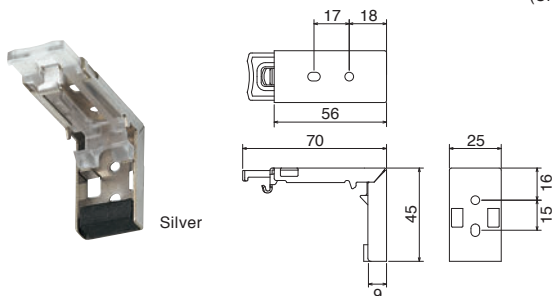
(Unit: mm)



When attachment inside the curtain box, use without Valance.

### Bracket (include)

(Unit: mm)



Product Width (W)	The Number of Bracket
640-1,200 mm	2
1,205-2,400 mm	3

### Option

#### Specification

Partition	page 20
Valance	page 24-25

\*Refer to each option page for available slat.

#### Component

Bracket Cover	page 21
Bracket Spacer	page 21

## Allowable Size

	STANDARD, EARTH, VINTAGE, COLT	PAULOWNIA
Product Width (W)	640–2,400 mm	640–2,400 mm
Product Height (H)	500–3,000 mm	500–3,000 mm
Maximum Area	5 m <sup>2</sup>	6 m <sup>2</sup>

\*For ordering, round down the nearest 5 mm in width.

\*For ordering, round down the nearest 10 mm in height, refer to Estimation of Finished Product Height below the price list for each series.

\*Please note that, due to the product characteristics, the product height might have a certain margin of error.

## The Number of Ladder Tapes and Lift Cords

STANDARD, PAULOWNIA, EARTH, VINTAGE, COLT

Product Width (W)	Ladder Cords	Lift Tapes
640–800 mm	2	2
805–1,200 mm	3	2
1,205–1,600 mm	4	2
1,605–2,400 mm	5	3

## Stack-up Guide

Calculation formula

STANDARD, PAULOWNIA, EARTH, VINTAGE	Finished Product Height (H) × 0.1 + 80 mm
COLT	Finished Product Height (H) × 0.078 + 80 mm

Dimension guide

(Unit: mm)

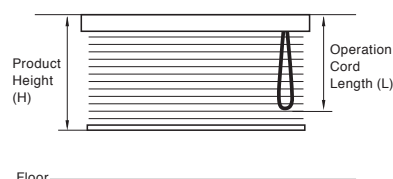
Finished Product Height (H)	1,000	1,430	1,820	2,210	2,600	3,020
STANDARD, PAULOWNIA, EARTH, VINTAGE	180	223	262	301	340	382
COLT	158	192	222	252	283	316

## Product Weight Guide

Product Width × Product Height	STANDARD	PAULOWNIA	EARTH	VINTAGE
900 × 1,390 mm	3.8 kg	2.9 kg	3.8 kg	3.8 kg
1,800 × 1,390 mm	7.2 kg	5.4 kg	7.2 kg	7.2 kg
1,800 × 1,820 mm	8.5 kg	6.1 kg	8.5 kg	8.5 kg
2,000 × 1,990 mm	9.8 kg	6.8 kg	9.8 kg	9.8 kg

Product Width × Product Height	COLT
900 × 1,390 mm	3.8 kg
1,800 × 1,390 mm	7.2 kg
1,800 × 1,820 mm	8.5 kg
2,000 × 1,990 mm	9.8 kg

## Operation Cord Length



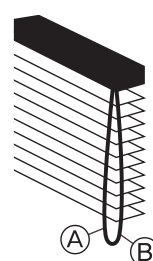
[Product Height (H)]  
From the top of the Bracket  
(or of the Valance) to the  
bottom of the Bottom Rail

[Operation Cord Length (L)]  
From the top of the Bracket  
(or of the Valance) to the lowest  
point of the Operation Cord

Product Height (H)	Operation Cord Length (L)
–790 mm	650 mm
800–1,000 mm	750 mm
1,010–1,180 mm	900 mm
1,190–1,390 mm	1,100 mm
1,400–1,560 mm	1,300 mm
1,570–1,780 mm	1,400 mm
1,790–2,170 mm	1,600 mm
2,180–2,600 mm	1,800 mm
2,610–2,770 mm	2,000 mm
2,780–3,000 mm	2,200 mm

\*When attachment in a position  
higher than the product height,  
such as high windows, specify  
separately the Operation Cord  
Length in units of 10 mm.

## Operation Method



[Lowering the blind]

Pull down the (A) side of the Cord about 40 cm, and  
automatically close the slat.

[Lifting the blind]

Pull down the (B) side of the Cord, and then release at the  
desired position to hold.

[Adjusting a Slat angle]

Pull down the (A) side or the (B) side for adjusting.



### Caution

\*The Operation Cord will be locked if the Bottom Rail touches an  
obstacle when lowering. To unlock, pull down the Cord (B) after taking  
the obstacle away.

\*The Operation Cord will also be locked when reaching the lowest  
position but this is just to protect the Lift Tape from reverse winding.  
It does not fail to operate properly.



### Warning

Avoid getting entangled or caught in the Cord  
or Chain. It may lead to a hazardous accident.

Japan Window  
Blind Association



日本ブラインド工業会



### Warning

In a family they have small children, do not place  
the sofa or bed close to the cord or chain of blind or  
screen. Their hands will reach if children climb the  
sofa or bed, accident risks will increase.

Japan Window  
Blind Association



日本ブラインド工業会

## Others

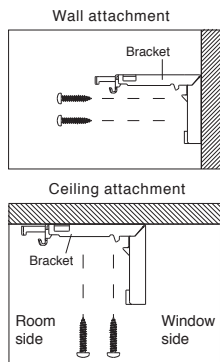
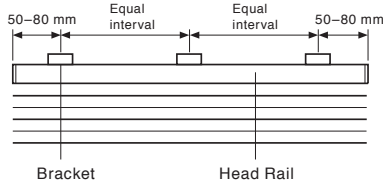
Refer to page 34–35 for installation method, how to take measurements and  
height adjustment method.

# VENEWOOD 50/ 50T, VENEWOOD TOUCH 50/ 50T common

## Installation Method

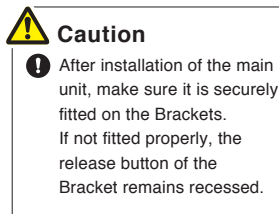
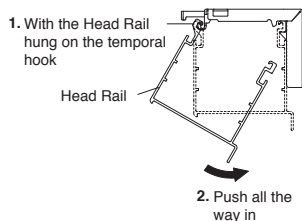
### 1 Bracket installation

1. Install the Bracket in a position 50–80 mm inward from each end of the Head Rail.
2. Fit the Bracket with accompanying screws.



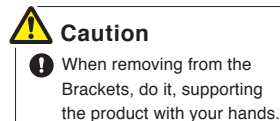
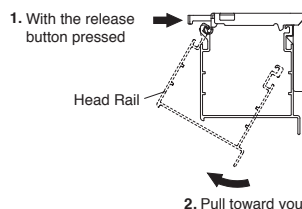
### 2 Installing the main unit

1. With the Slats stacked up, hang the Head Rail on the temporal hook of each Bracket.
2. Push the Head Rail in until it clicks into place.



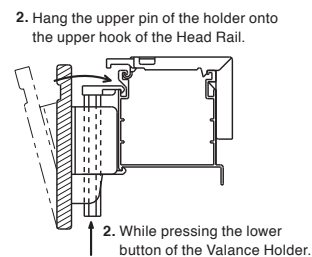
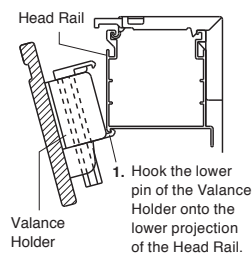
### 3 Removing the main unit

1. With the Slats stacked-up, grasp the main unit and pull the Head Rail toward you, pressing the Bracket release button.
2. Remove the main unit from the temporal hook.



### 4 Valance installation (option)

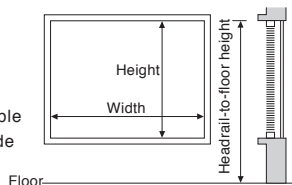
1. Hook the lower pin of the Valance Holder onto the lower projection of the Head Rail.
2. With the lower button of the Valance Holder pressed, push the balance in the Head Rail and, then, hang the upper pin of the holder onto the upper hook of the Head Rail.



## How to Take Measurements

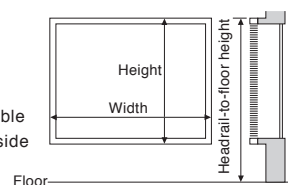
### When installing inside the window frame (Ceiling attachment)

Subtract around 10 mm from the actual inside width.  
Specify a finished height in the price table of the catalog, based on the actual inside height.



### When installing outside (Front side) the window frame (Outside attachment)

Specify the actual outside width for a finished width.  
Specify a finished height in the price table of the catalog, based on the actual outside height.



### In case fitting the blind inside the curtain box

Subtract around 10 mm from the box inside width. Measure the height from the top of the box inside.

## Height Adjustment Method

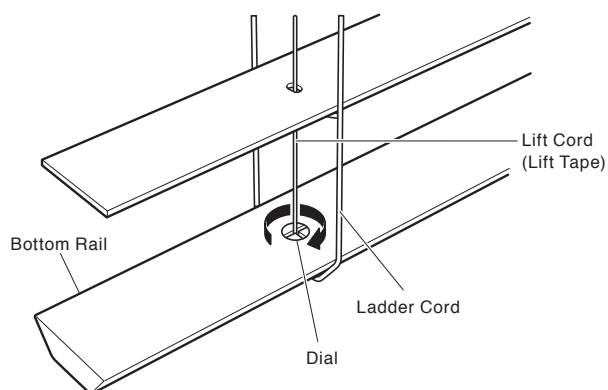
The product height can be adjusted after installation.  
You can reduce the height of one pitch of the ladder cord (tape).  
Since the height can be adjusted after the product is installed, it can be set at the perfect height for the inside of a window frame or relative to the floor without contacting either.



### For the Ladder Cord

VENEWOOD 50 / VENEWOOD TOUCH 50

Insert a coin or flathead screwdriver in the Dial on the top of the Bottom Rail. Shorten the height of the blind by rotating clockwise.



\*About 7.5 mm shorter per 1/4 dial rotation. Adjustable by up to 1 rotation = about 30 mm.

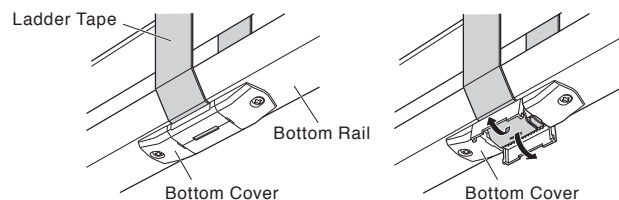
\*The Dial is attached to the position of the Ladder Cord. When you perform a height adjustment, turn all of the dials the same number of rotations.

\*After shortening the height, you can return to the original height by rotating the Dial in the reverse direction.

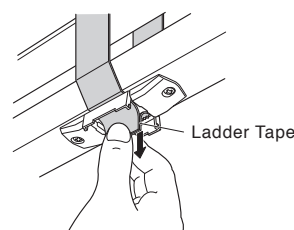
### For the Ladder Tape

VENEWOOD 50T / VENEWOOD TOUCH 50T

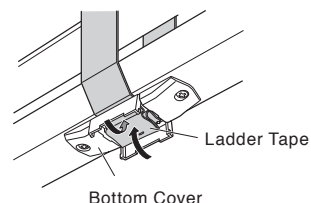
- 1 Open the Bottom Cover at the lower part of the Bottom Rail. If the cover is stiff, pry it open with a coin.



- 2 Pull out the Ladder Tape from the Bottom Cover.



- 3 Fold the pulled out Ladder Tape into the Bottom Cover and close the cover.



\*Shortens by the length of the Ladder Tape pulled out. Adjustable by up to about 30 mm at maximum.

\*The Bottom Cover is attached to the position of the Ladder Tape. When adjusting the height, please pull out same length of Ladder Tape from all Bottom Covers.

\*If the Ladder Tape does not fit completely in the Bottom Cover, cut and put the tape.



# **VENEWOOD 50/ 50T, VENEWOOD TOUCH 50/ 50T common**

## **How to Change the Operation Side**

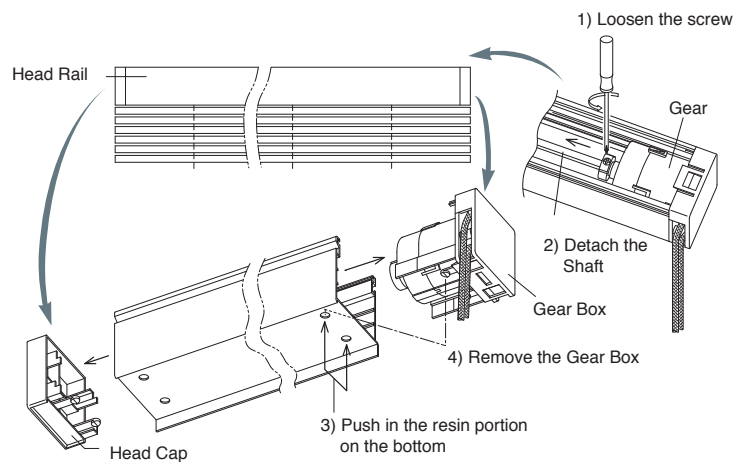
\*VENEWOOD TOUCH series are not available.

- 1 With the Slats stacked-up, take off the blind.

- 2 Loosen the screw in the joining area between the Shaft and the Gear Box inside the Head Rail and detach the Shaft from the Gear Box. Slide the Gear Box out of the Head Rail, pushing in the resin portion on the bottom of the Head Rail.

\*Using long-nose pliers makes it easier to push in the resin portion. Remove the Head Cap on the opposite side from the Head Rail as well.

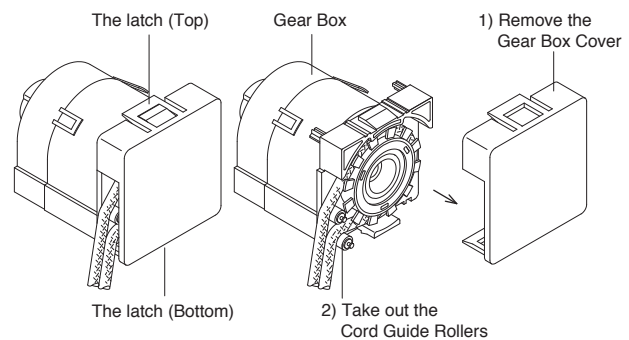
\*Be sure the Shaft does not come out of the Drum.



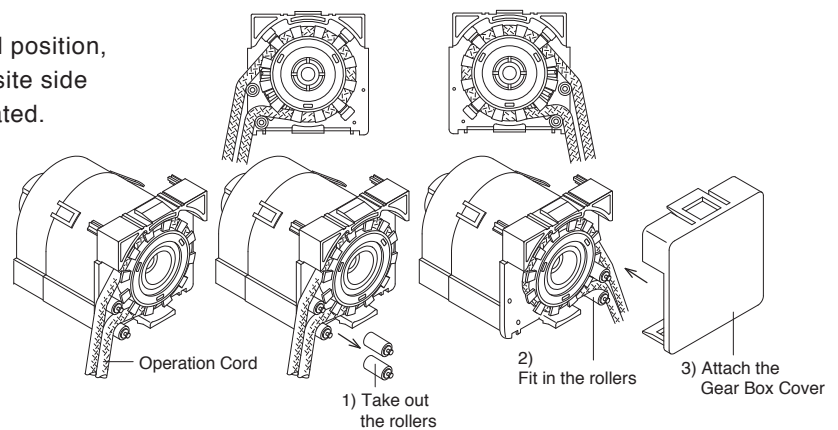
- 3 Remove the Gear Box Cover from the Gear Box taken out from the Head Rail.

\*The latches are easier to remove if removing the bottom one first and the upper one afterwards. Take out two Cord Guide Rollers from the Gear Box. Insert the Operation Cord into a gap between the gear teeth and move it around to the opposite side.

\*When removing the Gear Box Cover, the Cord Guide Rollers may come off easily. Be sure not to lose them.

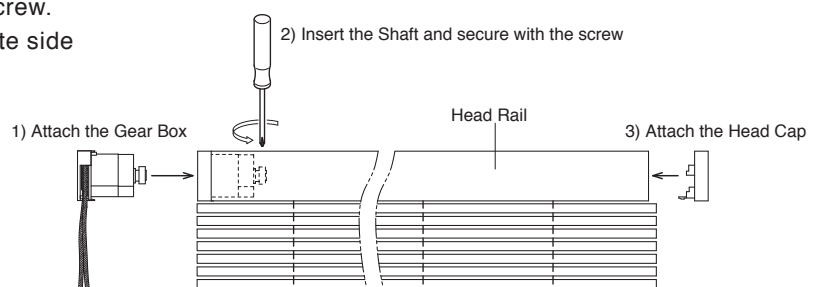


- 4 Place the Operation Cord in the specified position, fit the Cord Guide Rollers in on the opposite side and attach the Gear Box Cover as illustrated.



- 5 Insert the Gear Box on the opposite side of the Head Rail. Be sure that the Shaft is fitted into the Gear Box and, then, secure with the screw. Finally, attach the Head Cap to the opposite side of the Head Rail.

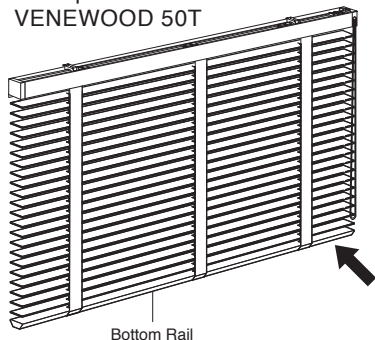
\*When fitting the Gear Box/Head Cap into the Head Rail, push in until they click into place.



### Maintenance Sticker

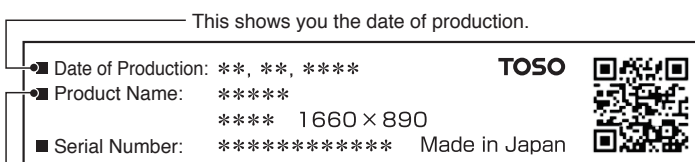
For preventive maintenance, a maintenance sticker attached to the product you bought.  
Please refer to the sticker in case you need to contact us or repair the blind.

Example:  
VENEWOOD 50T



With the QR code reader of your mobile phone, you can read a QR code on the sticker and access our site to get the product information.

Attention: you may not be able to read the QR code if the sticker gets dirty or damaged.



This shows you the following information.

*****	*****	1660 × 890	
Product Name	Color No.	Product Width	Product Height

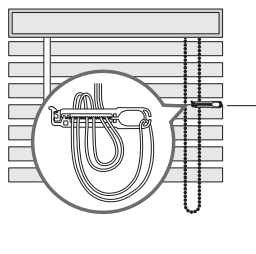
### For maintenance

Wipe off dust on blinds with a duster or a dry cloth.  
If stained, clean it off with a damp cloth that has been wrung thoroughly.  
Ventilate the room for a while after fitting.

## TOSO Safety Device

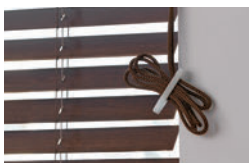
### Cord Clip

For bundling cords and chains. Bundle in a place out of reach of children to prevent accidents.



Bundle the operation cord.  
Color: White

Available Product:  
VENEWOOD, VENEWOOD TOUCH



\*While the Safety Devices above will reduce risks, it will never eliminate risks it altogether.  
Be aware of possible risks involving the Cord or Chain and use with care at all times.

# How to Order

## STEP 1 Choose the product.

e.g.) VENEWOOD 50T

- VENEWOOD 50 (Loop Cord Type, Ladder Cord Type)
- VENEWOOD TOUCH 50 (One-touch Closing Type, Ladder Cord Type)
- VENEWOOD 50T (Loop Cord Type, Ladder Tape Type)
- VENEWOOD TOUCH 50T (One-touch Closing Type, Ladder Tape Type)

## STEP 2 Choose the Slat number.

ex. TM-2007

\*WAVE needs you to choose the style A or the style B, in addition to the Slat selection.

## STEP 3 Specify the Valance, if necessary (Additional Charge, see page 24–25)

e.g.) Type L (for left)

Available specify the Valance if you choose VENEWOOD or VENEWOOD TOUCH.

\*Type C is the Head Rail (standard), if not specified.

\*FR/ WR and COLT are not available be used.

## STEP 4 Specify your Ladder Tape color if you want to change.

e.g.) Ladder Tape: L-015

\*We apply our standard color coordination if not specified.

\*Ladder Tape color choice is only possible for a Ladder Tape Type (50T only).

## STEP 5 Specify the dimensions (width and height) of the blind in millimeters.

e.g.) Width: 1,000 mm, Height: 1,050 mm

For ordering, round down the nearest 5 mm in width and, 10 mm in height.

\*Please note that, due to the product characteristics, the product height might have a certain margin of error.

Please check "Estimation of finished product height" back of each series price list.

\*If you wish Two-on-One Head Rail Blind Set (option), the product width will be available in 10 mm increments.

## STEP 6 Specify the control position.

e.g.) Right hand control

Right hand control or left hand control

\*Specify in the 10 mm for Operation Cord length, if you install at a higher position than the product height.

## STEP 7 Specify the quantity.

e.g.) 2 blinds side by side

When you want to have several blinds side by side, specify "side by side."

\*If you specify "side by side," we will ship the blind sets with the same number of slats.

However, there may be differences in the position of adjacent slats due to cord elongation, etc.

## STEP 8 Specify optional parts if necessary.

e.g.) Bracket Spacer 12: 2 pieces

- |                   |                 |                                  |                     |                  |
|-------------------|-----------------|----------------------------------|---------------------|------------------|
| Additional Charge | ● Back Valance  | ● Two-on-One Head Rail Blind Set | ● Color Combination | ● Bracket Spacer |
| No-charge         | ● Partition Use | ● Bracket Cover *                |                     |                  |

\*Bracket Cover will be offered free if you specified when ordering products.

\*Refer to page 23 for "How to Order for Color Combination".

# Order Form

Use this sheet for a Wood Blind order.

\*For the Color Combination order, please refer to Page 40.

Product Name	Slat Series	Number	Ladder Type	Product Dimensions widthxheight	Headrail-to-floor Height	Control Position	Option		Quantity
							Valance *1	Others	
VENEWOOD 50 / 50T Loop Cord Type	STANDARD / PAULOWNIA / EARTH / VINTAGE	TM-	<input type="checkbox"/> Ladder Cord <input type="checkbox"/> Ladder Tape *Specify the Ladder Tape here if necessary. L-_____	x mm			<input type="checkbox"/> Type C <input type="checkbox"/> Type I (for inside) <input type="checkbox"/> Type I (for outside) <input type="checkbox"/> Others <input type="checkbox"/> Type L (for left) <input type="checkbox"/> Type L (for right)	<input type="checkbox"/> Bracket Cover (free) *2 <input type="checkbox"/> Bracket Spacer 12 <input type="checkbox"/> Bracket Spacer 22	
	COLT	TM-	<input type="checkbox"/> Ladder Cord <input type="checkbox"/> Ladder Tape *Specify the Ladder Tape here if necessary. L-_____	x mm				<input type="checkbox"/> Bracket Cover (free) *2 <input type="checkbox"/> Bracket Spacer 12 <input type="checkbox"/> Bracket Spacer 22	
	FR	TM-	<input type="checkbox"/> Ladder Cord <input type="checkbox"/> Ladder Tape *Specify the Ladder Tape here if necessary. L-_____	x mm			<input type="checkbox"/> Type C <input type="checkbox"/> Type I (for inside) <input type="checkbox"/> Type I (for outside) <input type="checkbox"/> Others <input type="checkbox"/> Type L (for left) <input type="checkbox"/> Type L (for right)	<input type="checkbox"/> Bracket Cover (free) *2 <input type="checkbox"/> Bracket Spacer 12 <input type="checkbox"/> Bracket Spacer 22	
	FR/ WR	TM-	Ladder Cord	x mm				<input type="checkbox"/> Bracket Cover (free) *2 <input type="checkbox"/> Bracket Spacer 12 <input type="checkbox"/> Bracket Spacer 22	
	WAVE <input type="checkbox"/> style A <input type="checkbox"/> style B	TM-	Ladder Cord	x mm			<input type="checkbox"/> Type C <input type="checkbox"/> Type I (for inside) <input type="checkbox"/> Type I (for outside) <input type="checkbox"/> Others <input type="checkbox"/> Type L (for left) <input type="checkbox"/> Type L (for right)	<input type="checkbox"/> Bracket Cover (free) *2 <input type="checkbox"/> Bracket Spacer 12 <input type="checkbox"/> Bracket Spacer 22	

Product Name	Slat Series	Number	Ladder Type	Product Dimensions widthxheight	Headrail-to-floor Height	Control Position	Option		Quantity
							Valance *1	Others	
VENEWOOD TOUCH 50 / 50T One-touch Closing Type	STANDARD / PAULOWNIA / EARTH / VINTAGE	TM-	<input type="checkbox"/> Ladder Cord <input type="checkbox"/> Ladder Tape *Specify the Ladder Tape here if necessary. L-_____	x mm			<input type="checkbox"/> Type C <input type="checkbox"/> Type I (for inside) <input type="checkbox"/> Type I (for outside) <input type="checkbox"/> Others <input type="checkbox"/> Type L (for left) <input type="checkbox"/> Type L (for right)	<input type="checkbox"/> Bracket Cover (free) *2 <input type="checkbox"/> Bracket Spacer 12 <input type="checkbox"/> Bracket Spacer 22	
	COLT	TM-	<input type="checkbox"/> Ladder Cord <input type="checkbox"/> Ladder Tape *Specify the Ladder Tape here if necessary. L-_____	x mm				<input type="checkbox"/> Bracket Cover (free) *2 <input type="checkbox"/> Bracket Spacer 12 <input type="checkbox"/> Bracket Spacer 22	

\*1 Ordering Valance Options only when ordering products.

\*2 The Bracket Cover is free only when ordering products.



# Color Combination Order Form

Please see page 23, for details.

- 1

Product Name

☐ VENEWOOD 50 (Loop Cord Type, Ladder Cord Type)

☐ VENEWOOD 50T (Loop Cord Type, Ladder Tape Type)

☐ VENEWOOD TOUCH 50 (One-touch Closing Type, Ladder Cord Type)

☐ VENEWOOD TOUCH 50T (One-touch Closing Type, Ladder Tape Type)

- 2

Choose the Slat color and the other part colors.

\*Attention: Color combination requires you to specify each part color as well as Slat colors.

1

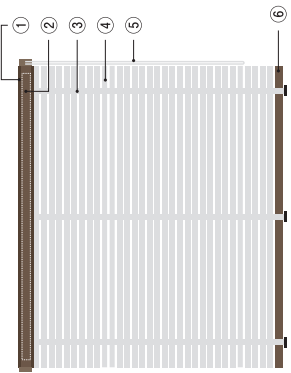
2

3

4

5

6



Part Color Select Table

① Head Rail (Unit)	
② Head Rail (Slat)	TM-
③ Ladder Tape	L-
④ Slat	Slat Color Select Table reference
⑤ Operation Cord	
⑥ Bottom Rail	TM-

\*Please specify the Ladder Tape (③) only from Ladder Tape Type.

\*For specifying Slat (④) colors, please fill in the table on the right.

- 3

Product Dimensions

Widthmm x Heightmm

\*Round down the nearest five millimeters in product width and select a suitable size from the price table in product height.

\*Please note that, due to the product characteristics, the product height might have a certain margin of error.

- 4

Control Position

☐ Left☐ Right
- 5

Valance (option)

☐ Type C

☐ Type I (for inside)☐ Type L (for left)

☐ Back-side Valance Set

☐ Type I (for outside)☐ Type L (for right)

☐ Customized Type (Specify the size when ordering a customized type.)

☐ Valance color specification request

TM-\_\_\_\_\_

\*For the details of each Valance, refer to page 24-25. \*Valance is none on the standard.

- 6

Specify Options

☐ Partition use☐ Two-on-One Head Rail Blind Set

☐ Bracket Spacer 12☐ Bracket Spacer 22☐ Bracket Cover

- 7

Quantity\_\_\_\_\_unit

\*When you want to have several blinds side by side, specify "side by side."

Slat Color Select Table

\*Combination of slats for STANDARD, PAULOWNIA, VINTAGE and COLT is not possible.

Product Height	Number of Slats	Number	Product Height	Number of Slats	Number
530	1	TM-	1130	24	TM-
	2	TM-	1180	25	TM-
	3	TM-	1220	26	TM-
	4	TM-	1260	27	TM-
	5	TM-	1310	28	TM-
	6	TM-	1350	29	TM-
	7	TM-	1390	30	TM-
	8	TM-	1430	31	TM-
	9	TM-	1480	32	TM-
	10	TM-	1520	33	TM-
570	11	TM-	1560	34	TM-
620	12	TM-	1610	35	TM-
660	13	TM-	1650	36	TM-
700	14	TM-	1690	37	TM-
750	15	TM-	1740	38	TM-
790	16	TM-	1780	39	TM-
830	17	TM-	1820	40	TM-
880	18	TM-	1860	41	TM-
920	19	TM-	1910	42	TM-
960	20	TM-	1950	43	TM-
1000	21	TM-	1990	44	TM-
1050	22	TM-	2040	45	TM-
1090	23	TM-	2080	46	TM-

\*Due to the product characteristics, the actual number of Slats may differ from that of this table above.



VENEWOOD 50 FR, TM-2501 Off White



VENEWOOD 50 STANDARD, TM-2004 Grayish Natural

# Wooden Blinds Product Manual

